

# BB120T-2/AU Pneumatic Blast Pot



## Product Features

The BB120T-2 Pneu4-1 is a tandem yard trailer mounted, pneumatically controlled, multiple outlet bulk blast pot suitable for on-site crew operations.

- ▶ Designed and manufactured in accordance with international standards and requirements.
- ▶ Third party pressure vessel certificates available on request.
- ▶ Tandem Valve for fast and efficient operation.
- ▶ AirStop II non-bleed type pneumatic deadman handle.
- ▶ Corsa II abrasive control valve, for precise control and immediate shut off.
- ▶ Optional abrasive cut off for compressed air blow down.
- ▶ Four (4) blasting outlets standard fitment.
- ▶ Butterfly type loading valve with pneumatic locking device.
- ▶ 76mm (3") Moisture Separator.
- ▶ 3360mm (120ft<sup>3</sup>) abrasive capacity, 120 psi pressure rating.

## Common Applications

- ▶ Multiple-operator, on site industrial and commercial blasting.
- ▶ Large Blast room applications with and without abrasive recovery systems.
- ▶ In situ blasting in shipyards and slipways.

## Complementary Products



Blast Hoses



Titan II SAR



Couplings & Nozzle Holders



Whip Checks



ATN Blast Nozzles



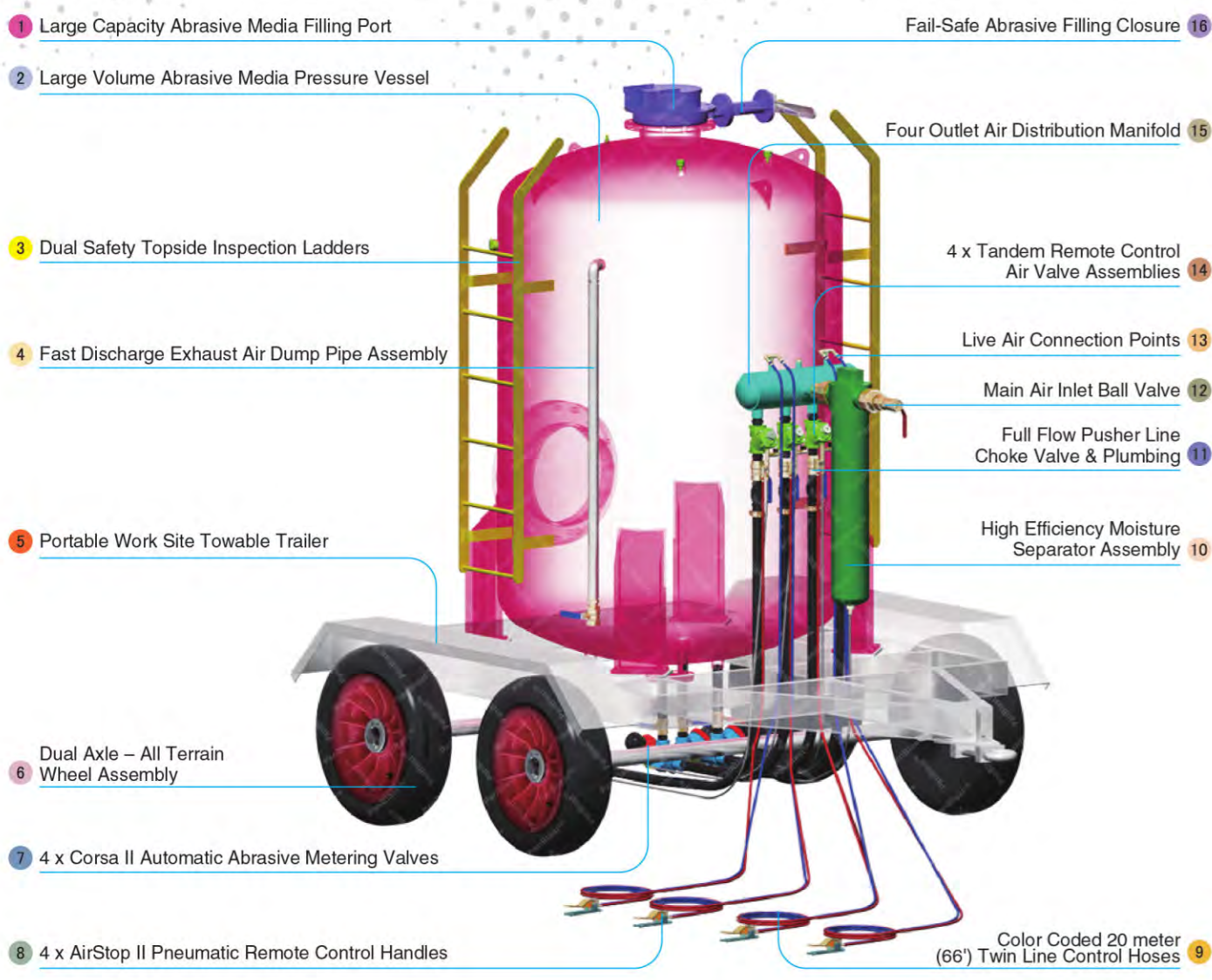
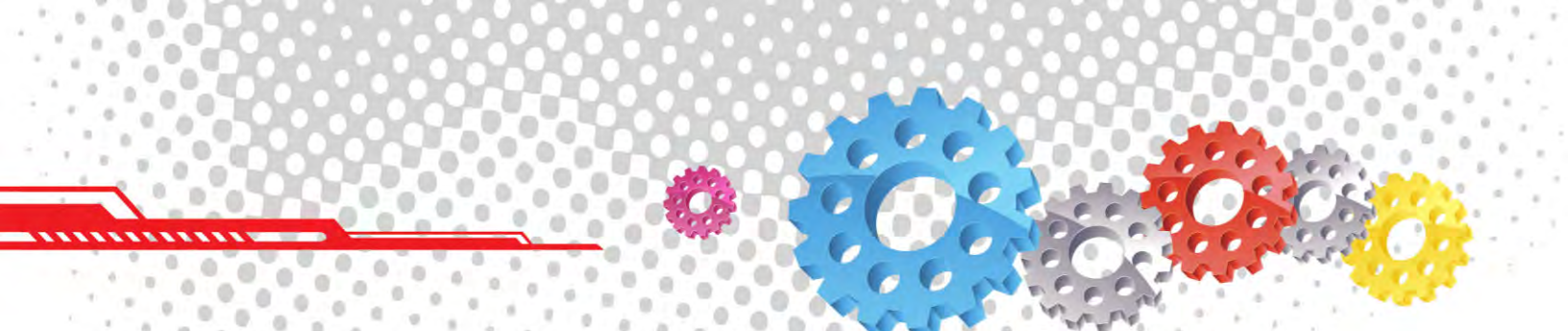
VisiFlo Premium Filter



Electric Remote Conversion Kit



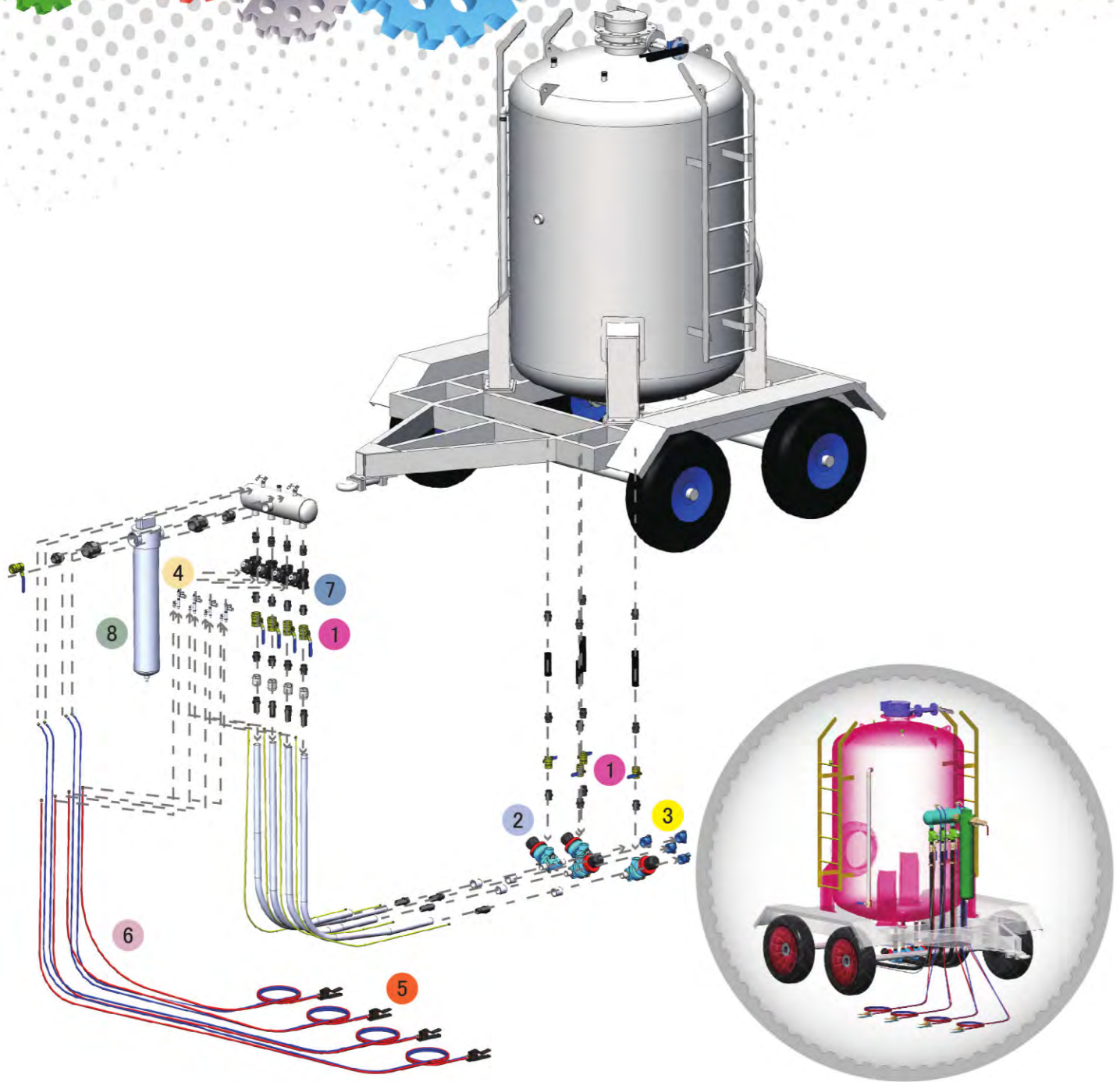
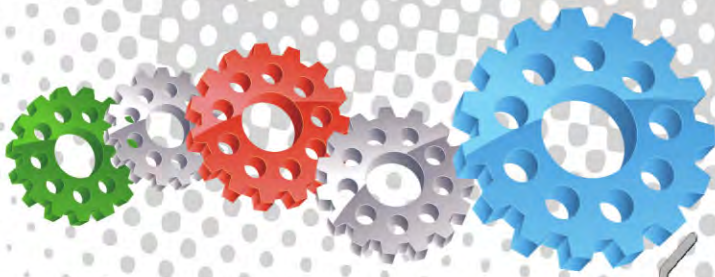
Blasting Suit & Gloves



## Component Highlights



- 1 Large Capacity Abrasive Media Filling Port
- 2 Large Volume Abrasive Media Pressure Vessel
- 3 Dual Safety Topside Inspection Ladders
- 4 Fast Discharge Exhaust Air Dump Pipe Assembly
- 5 Portable Work Site Towable Trailer
- 6 Dual Axle – All Terrain Wheel Assembly
- 7 4 x Corsa II Automatic Abrasive Metering Valves
- 8 4 x AirStop II Pneumatic Remote Control Handles
- 9 Color Coded 20 meter (66') Twin Line Control Hoses
- 10 High Efficiency Moisture Separator Assembly
- 11 Full Flow Pusher Line Choke Valve & Plumbing
- 12 Main Air Inlet Ball Valve
- 13 Live Air Connection Points
- 14 4 x Tandem Remote Control Air Valve Assemblies
- 15 Four Outlet Air Distribution Manifold
- 16 Fail-Safe Abrasive Filling Closure

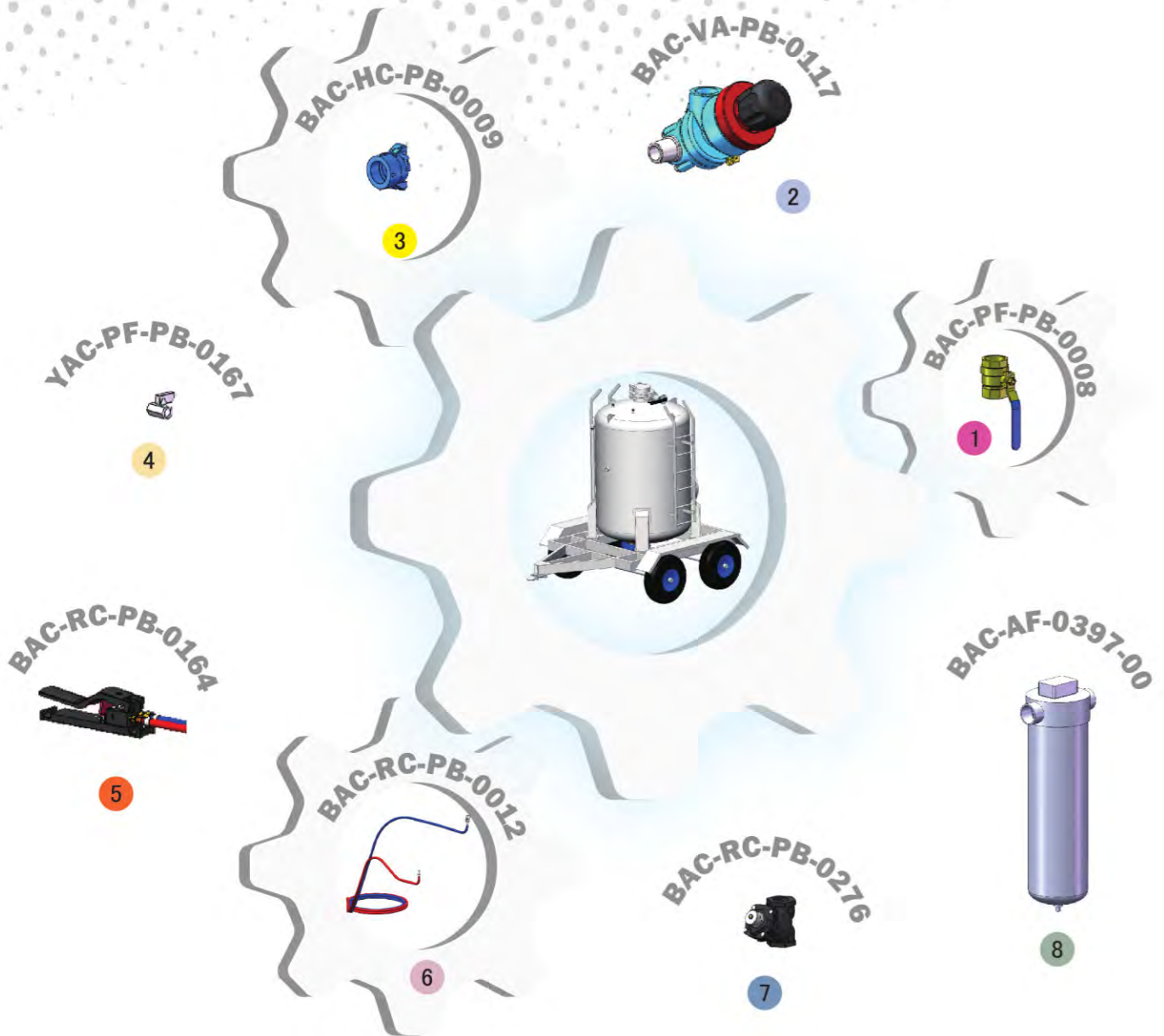


## Assembly

Stock Code	Description	Outlet	Abrasive Capacity	Piping Size
BEP-PE-PB-0003	BB120T-2/AU Corsa II Pneu4-1 AirStop II	4	3360 litres (120ft <sup>3</sup> )	32mm (1-1/4")



All data and information subject to change without prior notice. Brochure reference CAT-0104-03-00



## Parts List



Description	Qty	Description	Qty	Description	Qty
1 38mm (1-1/2") Ball Valve	9	4 Mini Ball Valve	4	7 1-1/4" Tandem NPT Valve Assembly	4
2 Corsa II 1-1/4" with Urethane Sleeve	4	5 AirStop II NPT Pneumatic Control Handle	4	8 76.2mm (3") Port Moisture Separator	1
3 NTC-1 Nylon Threaded Pot Coupling	4	6 20m (66') Twinline Hose Assembly	4		