

BB120S-2/AU Pneumatic Blast Pot



Product Features

The BB120S-2 Pneu4-1 is a skid mounted, pneumatically controlled, multiple outlet bulk blast pot suitable for on-site crew operations.

- ▶ Designed and manufactured in accordance with international standards and requirements.
- ▶ Third party pressure vessel certificates available on request.
- ▶ Tandem Valve for fast and efficient operation.
- ▶ AirStop II non-bleed type pneumatic deadman handle.
- ▶ PanBlast™ Corsa II abrasive control valve, for precise control and immediate shut off.
- ▶ Optional abrasive cut off for compressed air blow down.
- ▶ Four (4) blasting outlets standard fitment.
- ▶ Butterfly type loading valve with pneumatic locking device.
- ▶ 76mm (3") Moisture Separator.
- ▶ 3360mm (120ft³) abrasive capacity, 120 psi pressure rating.

Common Applications

- ▶ Multiple-operator, on site industrial and commercial blasting.
- ▶ Large Blast room applications with and without abrasive recovery systems.
- ▶ In situ blasting in shipyards and slipways.

Complementary Products



Blast Hoses



Titan II SAR



Couplings & Nozzle Holders



Whip Checks



ATN Blast Nozzles



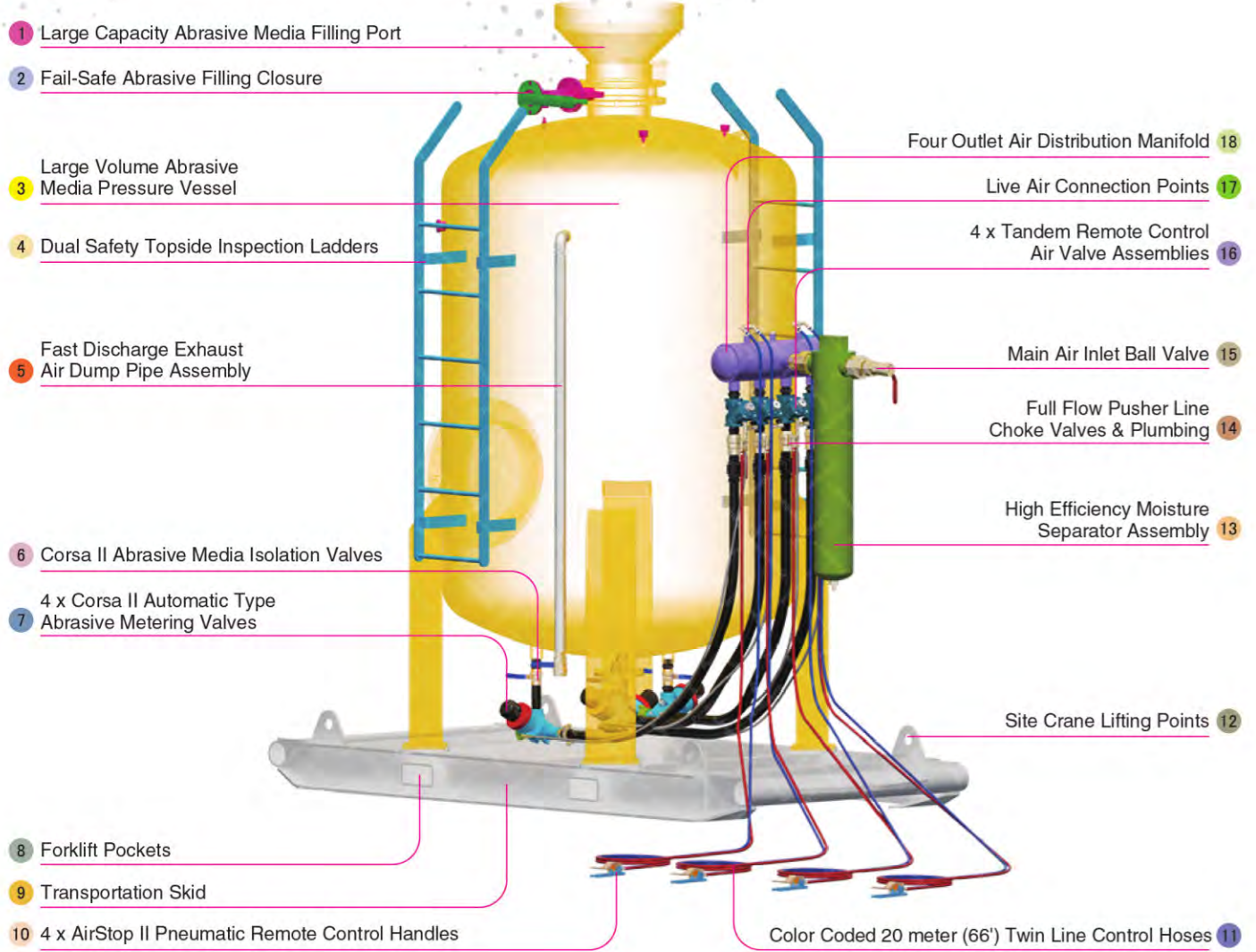
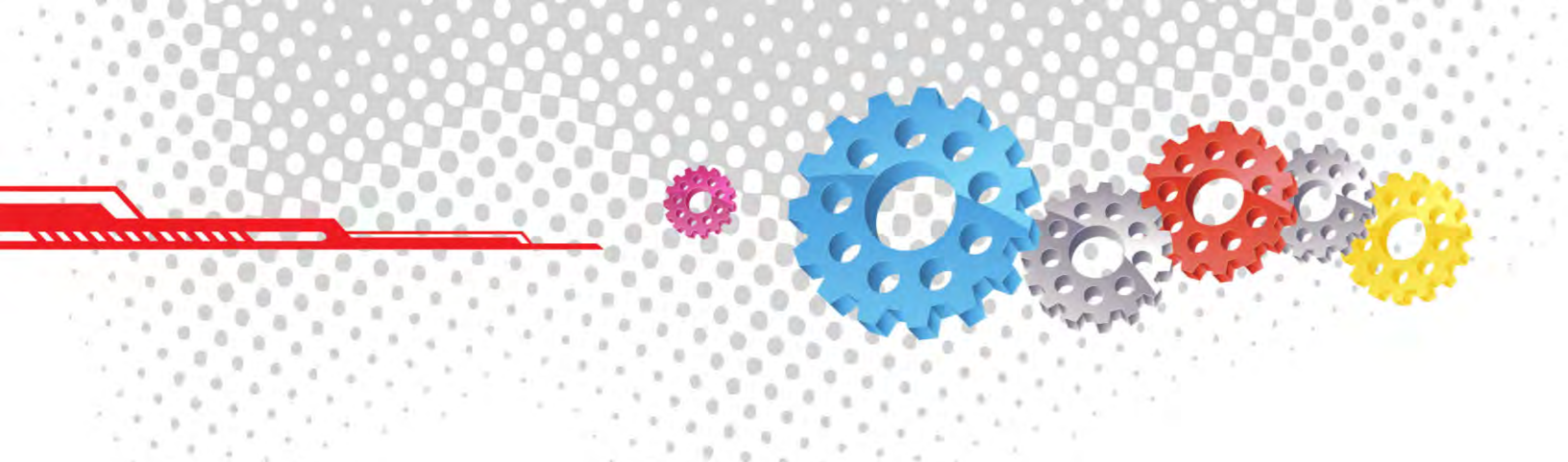
VisiFlo Premium Filter



Electric Remote Conversion Kit



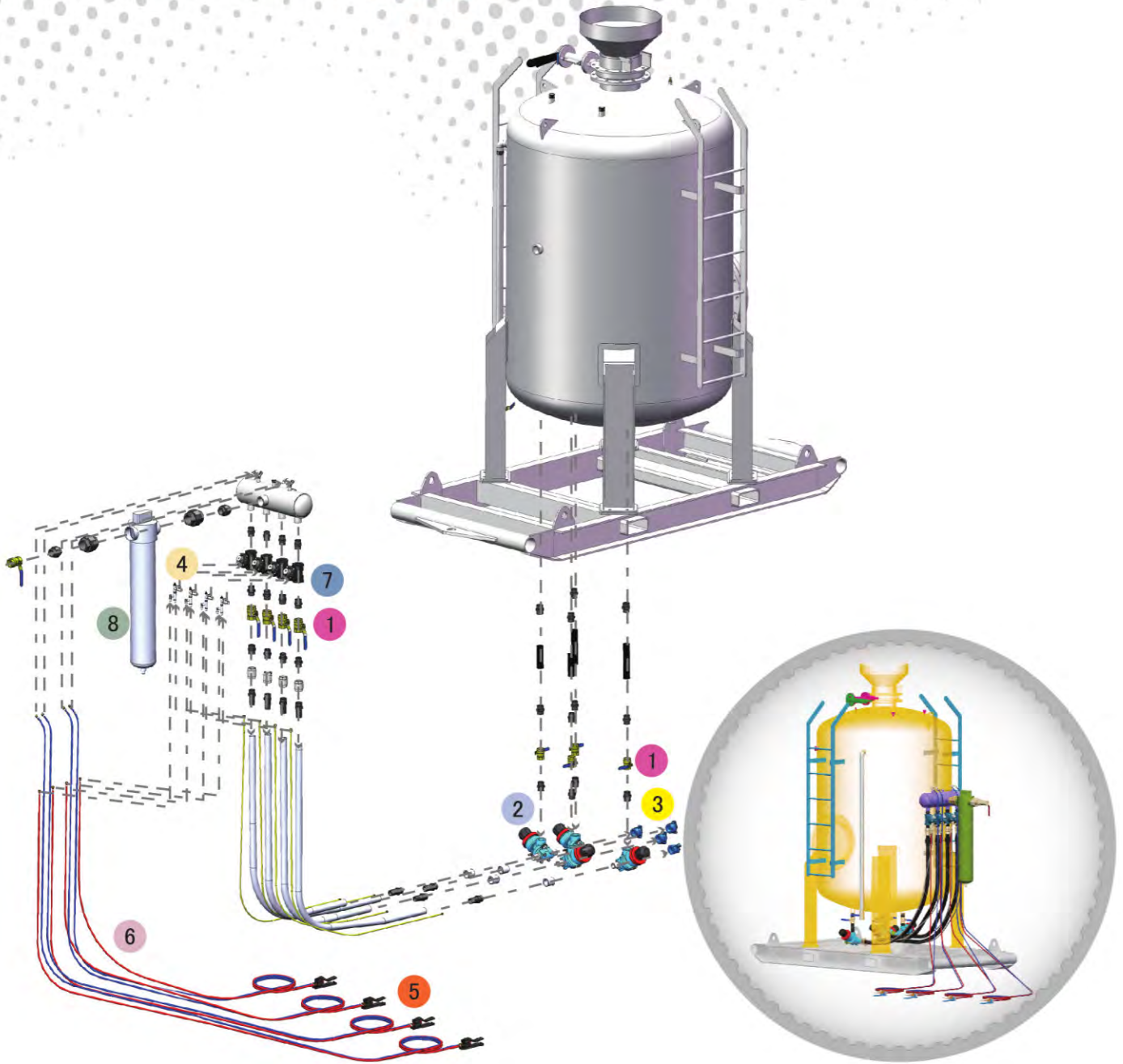
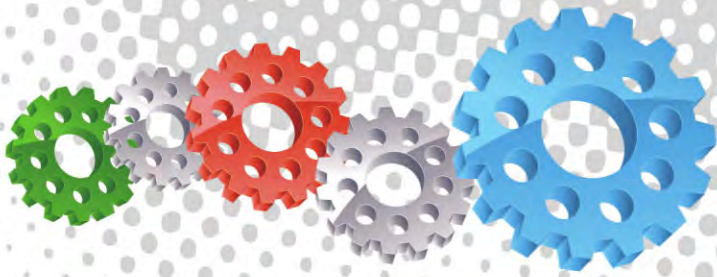
Blasting Suit & Gloves



- 1 Large Capacity Abrasive Media Filling Port
- 2 Fail-Safe Abrasive Filling Closure
- 3 Large Volume Abrasive Media Pressure Vessel
- 4 Dual Safety Topside Inspection Ladders
- 5 Fast Discharge Exhaust Air Dump Pipe Assembly
- 6 Corsa II Abrasive Media Isolation Valves
- 7 4 x Corsa II Automatic Type Abrasive Metering Valves
- 8 Forklift Pockets
- 9 Transportation Skid
- 10 4 x AirStop II Pneumatic Remote Control Handles
- 11 Color Coded 20 meter (66') Twin Line Control Hoses
- 12 Site Crane Lifting Points
- 13 High Efficiency Moisture Separator Assembly
- 14 Full Flow Pusher Line Choke Valves & Plumbing
- 15 Main Air Inlet Ball Valve
- 16 4 x Tandem Remote Control Air Valve Assemblies
- 17 Live Air Connection Points
- 18 Four Outlet Air Distribution Manifold

Component Highlights

- | | | |
|--|--|--|
| <ul style="list-style-type: none"> 1 Large Capacity Abrasive Media Filling Port 2 Fail-Safe Abrasive Filling Closure 3 Large Volume Abrasive Media Pressure Vessel 4 Dual Safety Topside Inspection Ladders 5 Fast Discharge Exhaust Air Dump Pipe Assembly 6 Corsa II Abrasive Media Isolation Valves | <ul style="list-style-type: none"> 7 4 x Corsa II Automatic Type Abrasive Metering Valves 8 Forklift Pockets 9 Transportation Skid 10 4 x AirStop II Pneumatic Remote Control Handles 11 Color Coded 20 meter (66') Twin Line Control Hoses 12 Site Crane Lifting Points | <ul style="list-style-type: none"> 13 High Efficiency Moisture Separator Assembly 14 Full Flow Pusher Line Choke Valves & Plumbing 15 Main Air Inlet Ball Valve 16 4 x Tandem Remote Control Air Valve Assemblies 17 Live Air Connection Points 18 Four Outlet Air Distribution Manifold |
|--|--|--|

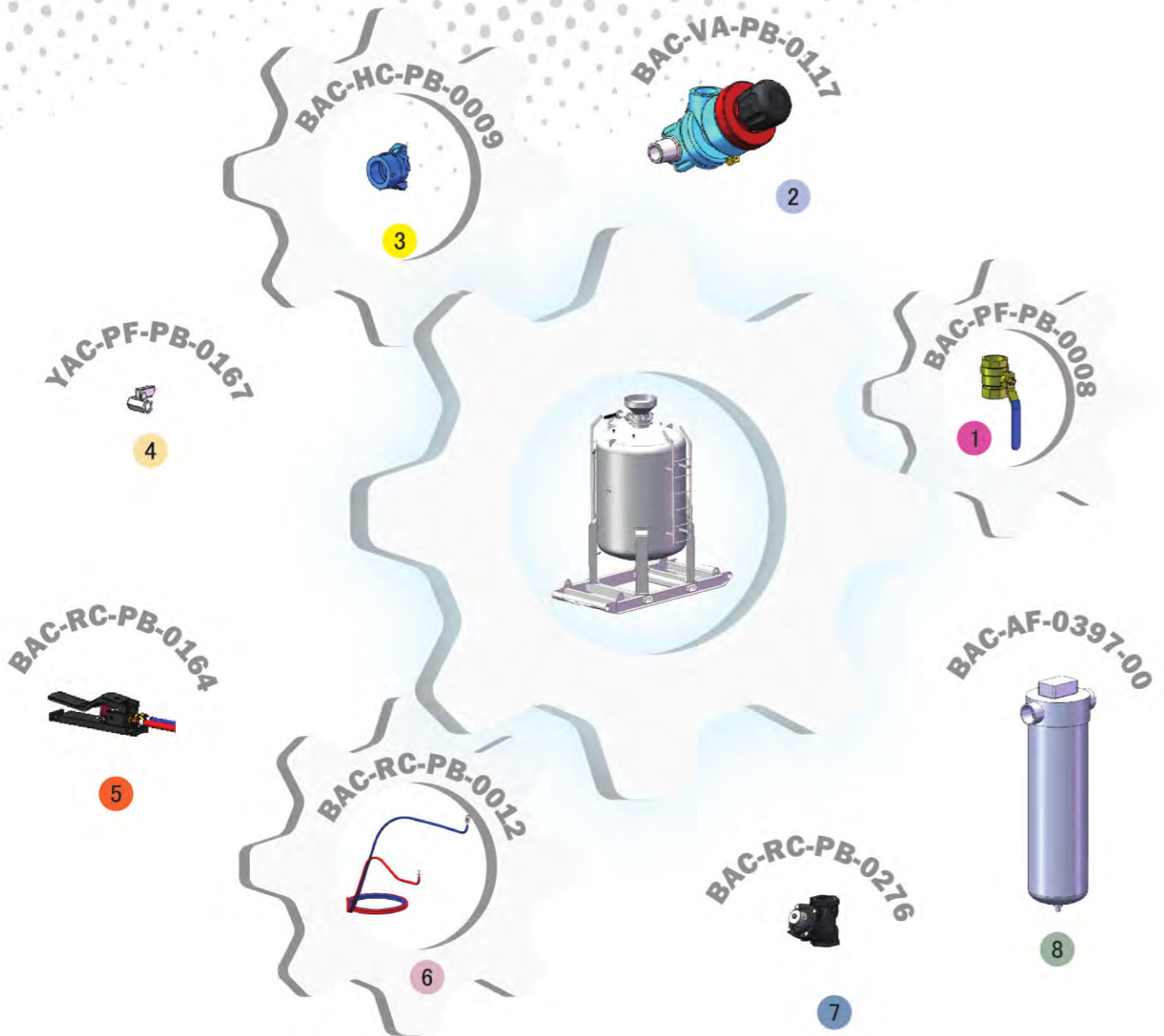


Assembly

Stock Code	Description	Outlet	Abrasive Capacity	Piping Size
BEP-PE-PB-0002	BB120S-2/AU Corsa II Pneu4-1 AirStop II	4	3360 litres (120ft ³)	32mm (1-1/4")



All data and information subject to change without prior notice. Brochure reference CAT-0104-02-00



Parts List



Description	Qty	Description	Qty	Description	Qty
1 38mm (1-1/2") Ball Valve	9	4 Mini Ball Valve	4	7 1-1/4" Tandem NPT Valve Assembly	4
2 Corsa II 1-1/4" with Urethane Sleeve	4	5 AirStop II NPT Pneumatic Control Handle	4	8 76.2mm (3") Port Moisture Separator	1
3 NTC-1 Nylon Threaded Pot Coupling	4	6 20m (66') Twinline Hose Assembly	4		