

PB500SP Blast Cabinet



Product Features

The PB500SP is a light-duty blast cabinet that offers an economical solution for low-to-medium volume production blasting applications with upgraded operator visibility and cleaning convenience from the reverse pulse jet dust collector providing cabinet ventilation. It is usable with a wide range of media, including:

- Chilled Iron Grit.
- Aluminium Oxide.
- Glass Beads.
- Garnet.
- Steel Grit.

- ▶ Safety door interlock.
- ▶ Integral dry cartridge reverse pulse dust collector for clear visibility.
- ▶ Heavy duty, wear resistant rubber gloves.
- ▶ Quick-change laminated glass viewing window – no tools required.
- ▶ Fully adjustable abrasive feed tee.
- ▶ Compatible with virtually any abrasive type.
- ▶ Compressed air regulator and gauge included.
- ▶ High performance Delta suction blast gun.

Common Applications

- ▶ De-scale and de-rust metal.
- ▶ Remove paint and coatings.
- ▶ Remove burrs, flashings and sand from castings and moldings.
- ▶ Decorative finishing of non-ferrous metals.
- ▶ Stone and glass etching.
- ▶ Mold cleaning.

Complementary Products



Delta GDF Manual Gun



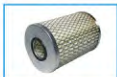
Delta SNH Auto Gun



Delta SNH Manual Gun



Delta GDF Auto Gun



Filter Cartridge



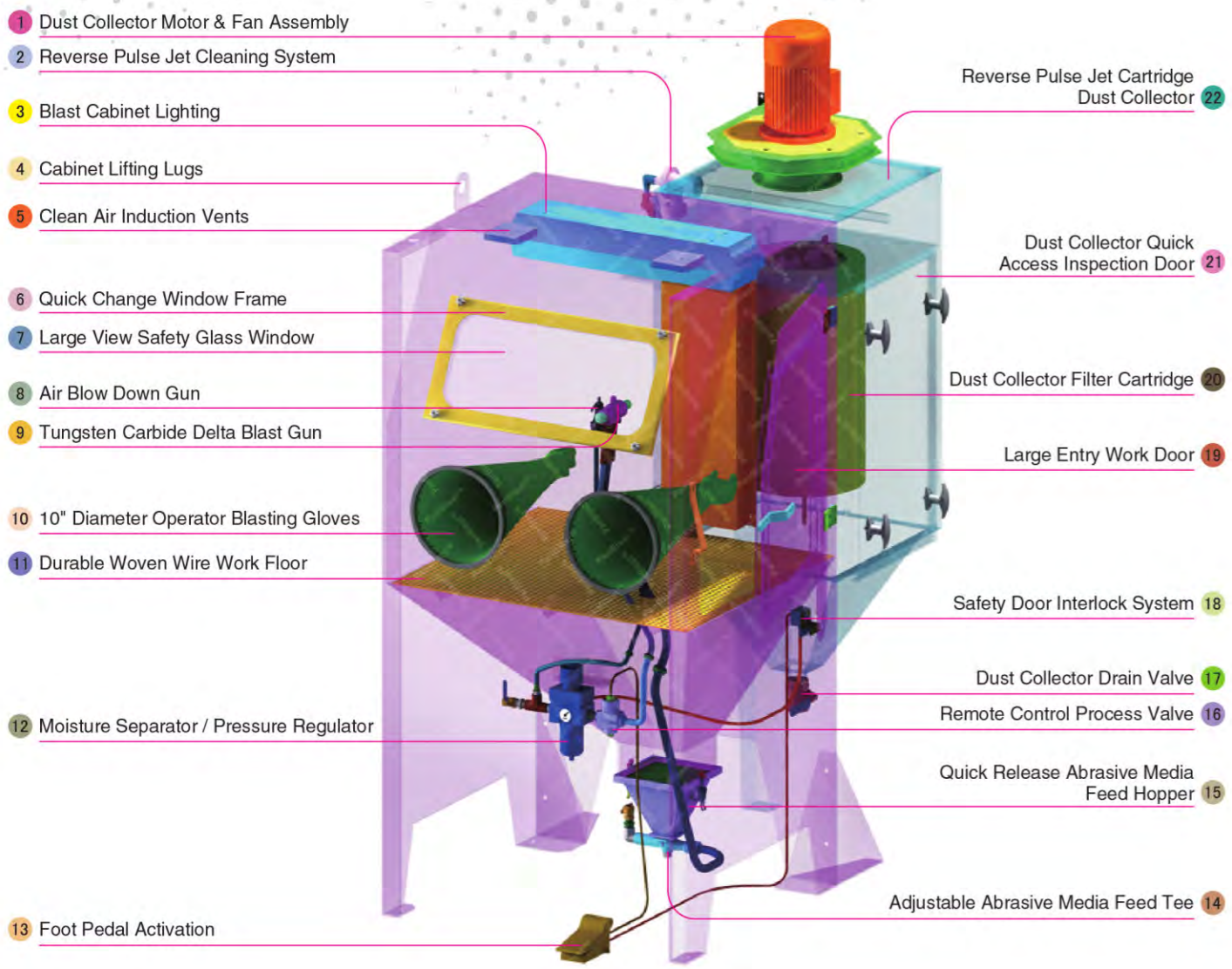
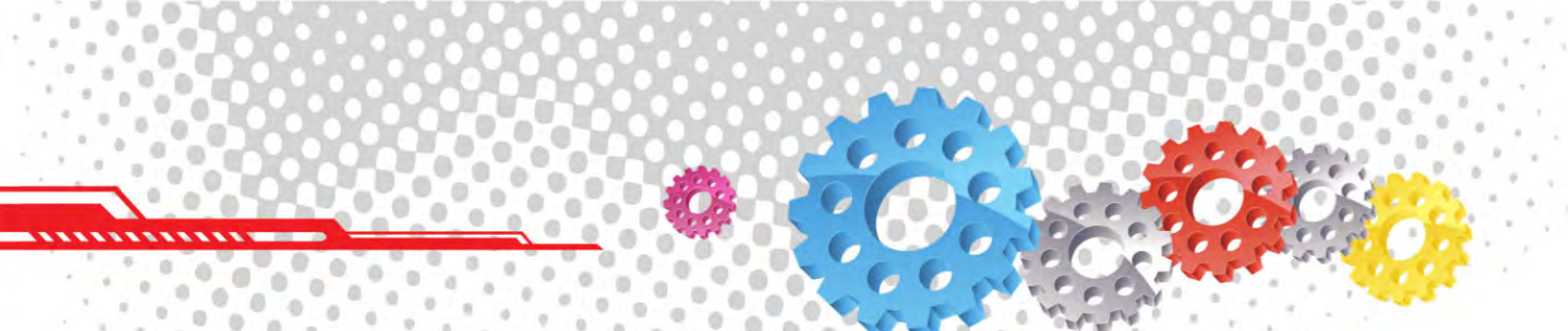
Moisture Separator



Cabinet Window Cover



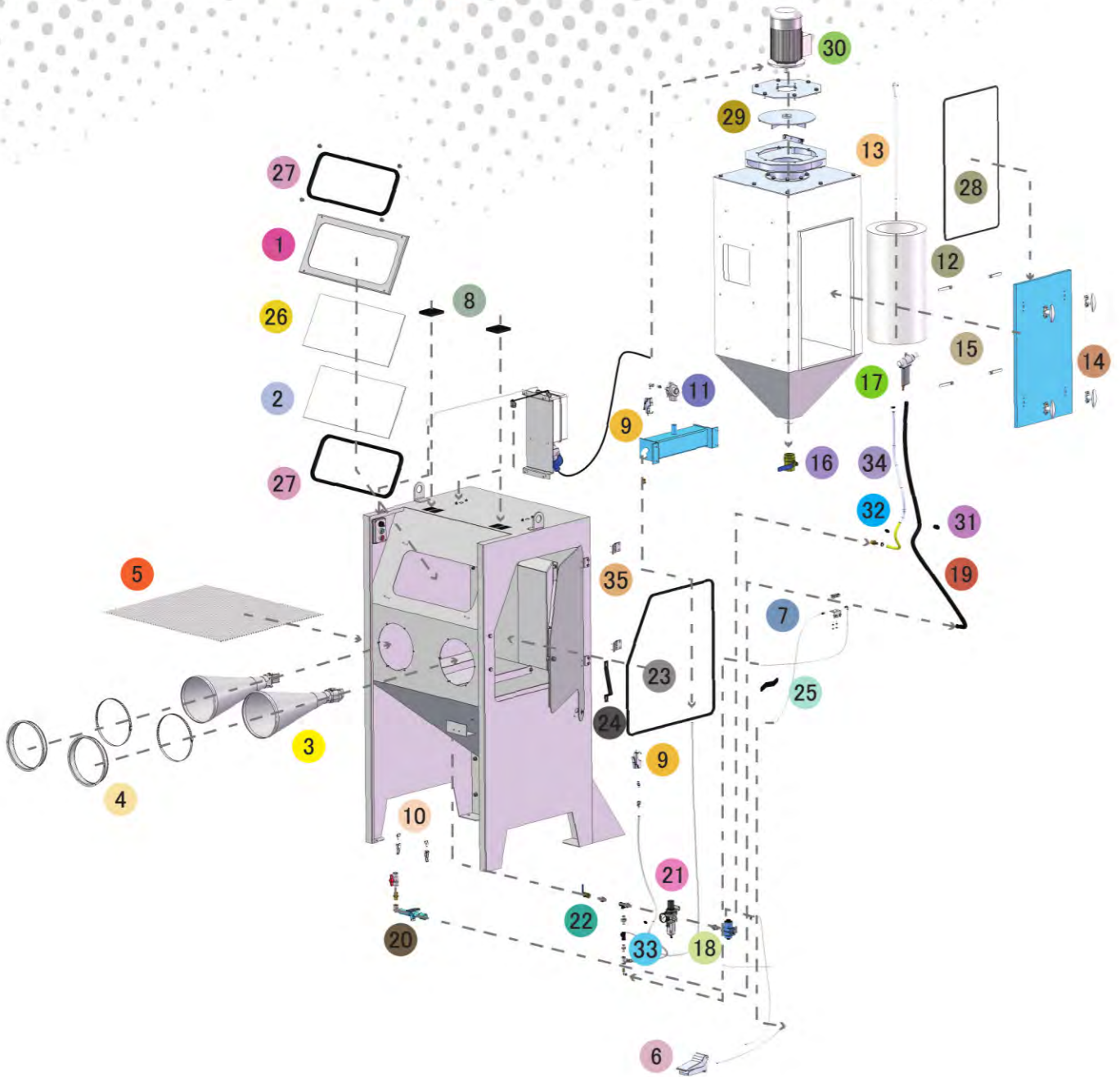
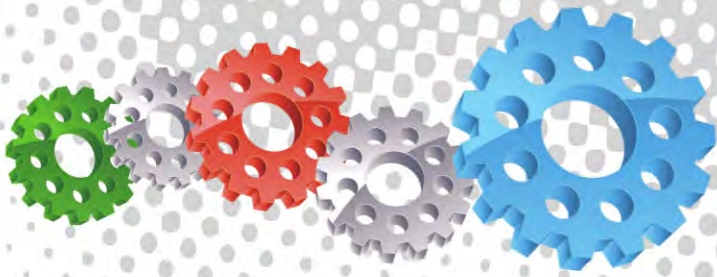
Pow Air Vac



Component Highlights



- | | | |
|---------------------------------------|---|--|
| 1 Dust Collector Motor & Fan Assembly | 9 Tungsten Carbide Delta Blast Gun | 17 Dust Collector Drain Valve |
| 2 Reverse Pulse Jet Cleaning System | 10 10" Diameter Operator Blasting Gloves | 18 Safety Door Interlock System |
| 3 Blast Cabinet Lighting | 11 Durable Woven Wire Work Floor | 19 Large Entry Work Door |
| 4 Cabinet Lifting Lugs | 12 Moisture Separator / Pressure Regulator | 20 Dust Collector Filter Cartridge |
| 5 Clean Air Induction Vents | 13 Foot Pedal Activation | 21 Dust Collector Quick Access Inspection Door |
| 6 Quick Change Window Frame | 14 Adjustable Abrasive Media Feed Tee | 22 Reverse Pulse Jet Cartridge Dust Collector |
| 7 Large View Safety Glass Window | 15 Quick Release Abrasive Media Feed Hopper | |
| 8 Air Blow Down Gun | 16 Remote Control Process Valve | |



Assembly

Stock Code	Description	Weight
BEC-CA-PB-0017	PB500SP Blast Cabinet Assembly	325kg (717lbs)

Optional Accessories

Stock Code	Description	Stock Code	Description
BAC-CA-PB-0427	Fixed Turntable	BAC-CA-PB-0428	Rubber Lined Cabinet
BAC-CA-PB-0277	Cabinet Gun Stand	BAC-CA-PB-0455	Foot Valve Guard
BAC-CA-PB-0335	Dust Collector Silencer Kit	BAC-DC-0002-01	Single Cartridge Auto-Reverse Pulse Kit

Parts List

Item	Stock Code	Description	Qty
1	YAC-CA-PB-0153	Window Frame	1
2	BAC-CA-PB-0156	Rectangular Window	1
3	BAC-GL-PB-0003	10" Ø Cabinet Rubber Gloves	1PR
4	BAC-CA-PB-0157	Cabinet Entry Ring	2
5	BAC-CA-PB-0155	Cabinet Floor Mesh	1
6	BAC-CA-PB-0086	Foot Valve Spring Return	1
7	YAC-CA-PB-0219	Interlock Plunger	1
8	BAC-CA-PB-0158	Air Entry Filter	2
9	YAC-CA-PB-0145	1/4" Blow Off Gun	2
10	YAC-FN-PB-0041	Toggle Catch	2
11	BAC-DC-PB-0007	Pulse Valve	1
12	BAC-DF-PB-0002	Filter Cartridge - Size 2	1
13	BAC-DC-PB-0031	Hanger Rod	1
14	YAC-CA-PB-0146	Handle	4
15	YAC-CA-PB-0205	Handle Tongue	4
16	BAC-PF-PB-0008	38mm (1-1/2") Ball Valve	1
17	BAC-BG-PB-0056	Delta-M Gun GDF 1/8 X 1/4 Assembly	1
18	BAC-RC-PB-0142	Sola5 Inlet Valve Sub Assembly	1
19	BAC-CA-0586-00	Abrasives Hose	1
20	BAC-CA-PB-0220	Feed Tee Assembly	1
21	BAC-AF-PB-0048	9.5mm (3/8") Filter Regulator With Gauge	1
22	BAC-PF-PB-0021	10mm (3/8") Ball Valve	1
23	BAC-CA-PB-0164	Cabinet Door Seal	1
24	YAC-CA-PB-0440	Door Latch	1
25	YAC-CA-PB-0439	Handle	1
26	BAC-CA-PB-0390	570 X 220 Window Cover – 5pcs	1
27	BAC-CA-PB-0161	Cabinet Window Seal	2
28	BAC-CA-PB-0406	Dust Collector Door Seal	1
29	YAC-CA-PB-0184	Fan Impellor – 240CFM Aluminium	1
30	YAC-CA-PB-0142	230VAC 1PH 50HZ Motor	1
31	BAC-CA-PB-0135	Rubber Sealing Grommet	1
32	YAC-CA-PB-0423	16mm Grommet	1
33	YAC-CA-0477-00	Grommet	1
34	BAC-AF-PB-0164	Air Hose 10mm 250psi Impact Blue	1.5M
35	YAC-CA-PB-0160	Hinge	2

Technical Data



- **Optional Turntable Load:**
250kg (551lbs)
- **Internal Size:**
900mm (35") Wide 783mm (31") Deep
730mm (29") High
- **Door Size:**
645mm (25") Wide 730mm (29") High
- **Air Consumption:**
36m³/hr (21cfm) @550kPa (80psi)
- **Suction Gun / Nozzle Size:**
BAC-BG-PB-0056 Delta Manual Gun 1/8" x 1/4"
- **Cabinet Light:**
2 x 18 Watt 230V 50Hz
- **Cabinet Overall Dimension:**
1000mm (40") Wide 1360mm (54") Deep
2220mm (88") High
- **Recommended Floor Area:**
2300mm (91") Wide 2300mm (91") Deep
- **Window Size:**
600mm (24") Wide 250mm (10") High
- **Air Supply Line:**
10mm (3/8")
- **Electrical Power:**
0.55Kw (0.75hp) 230VAC 50Hz 2 Pole 1 Phase

