

PB500P Blast Cabinet



Product Features

The PB500P Heavy Duty Pressure Blast Cabinet is a highly efficient, general purpose, industrial blast cabinet, compatible with a wide range of abrasive media, including:

- Chilled Iron Grit.
- Aluminium Oxide.
- Glass Beads.
- Garnet.
- Steel Grit.

- ▶ Up to three times faster than suction blast systems.
- ▶ 31 liters (1.1ft³) blast pot.
- ▶ Cyclone type abrasive separator cleans abrasive during use.
- ▶ Safety door interlock.
- ▶ Integral dry cartridge reverse pulse dust collector for clear visibility.
- ▶ Heavy duty wear resistant rubber gloves.
- ▶ Quick-change laminated glass viewing window - no tools required.
- ▶ Fina II abrasive metering valve.
- ▶ Compressed air regulator and gauge.
- ▶ Standard air blow down gun.

Common Applications

- ▶ De-scale and de-rust metal.
- ▶ Remove paint and coatings.
- ▶ Remove burrs, flashings and sand from castings and moldings.
- ▶ Decorative finishing of non-ferrous metals.
- ▶ Stone and glass etching.
- ▶ Mold cleaning.

Complementary Products



ATN-S Blast Nozzles



ABN-S Blast Nozzles



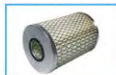
ATN-M Blast Nozzles



AER85 Blaster



Pow Air Vac



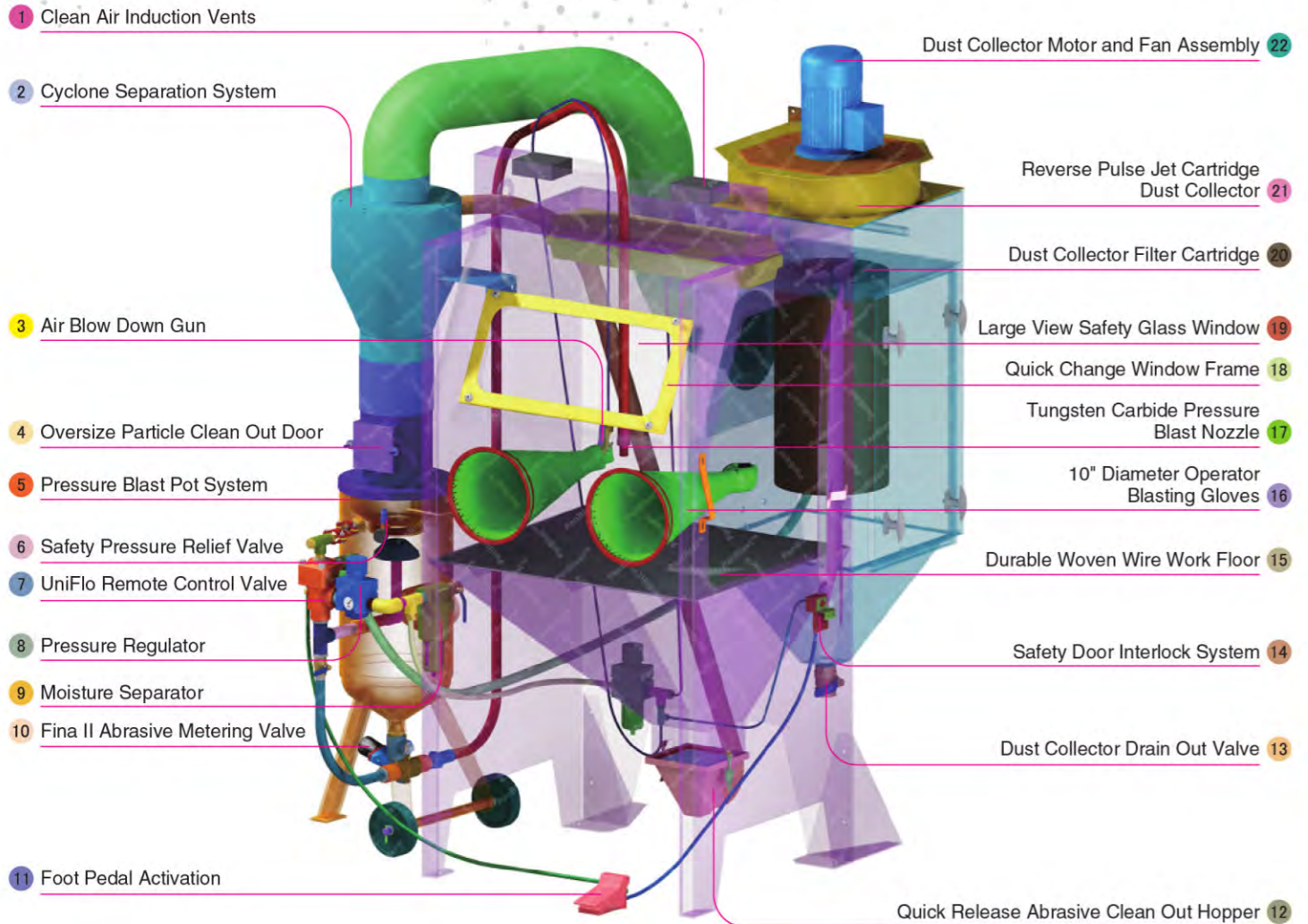
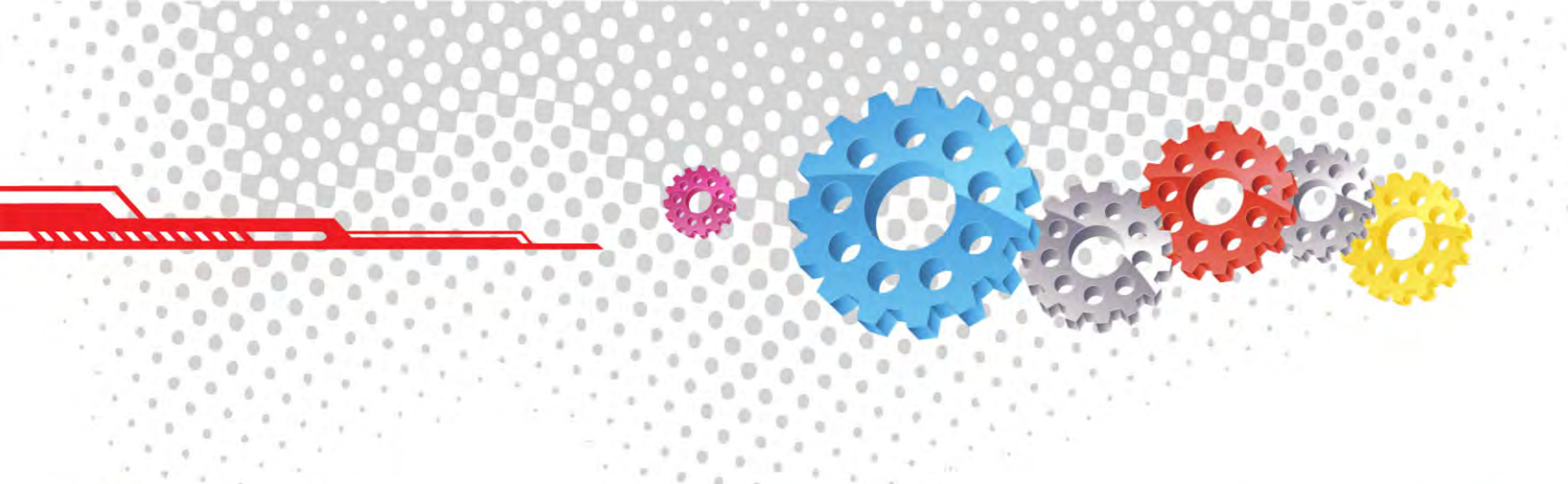
Filter Cartridge



Moisture Separator



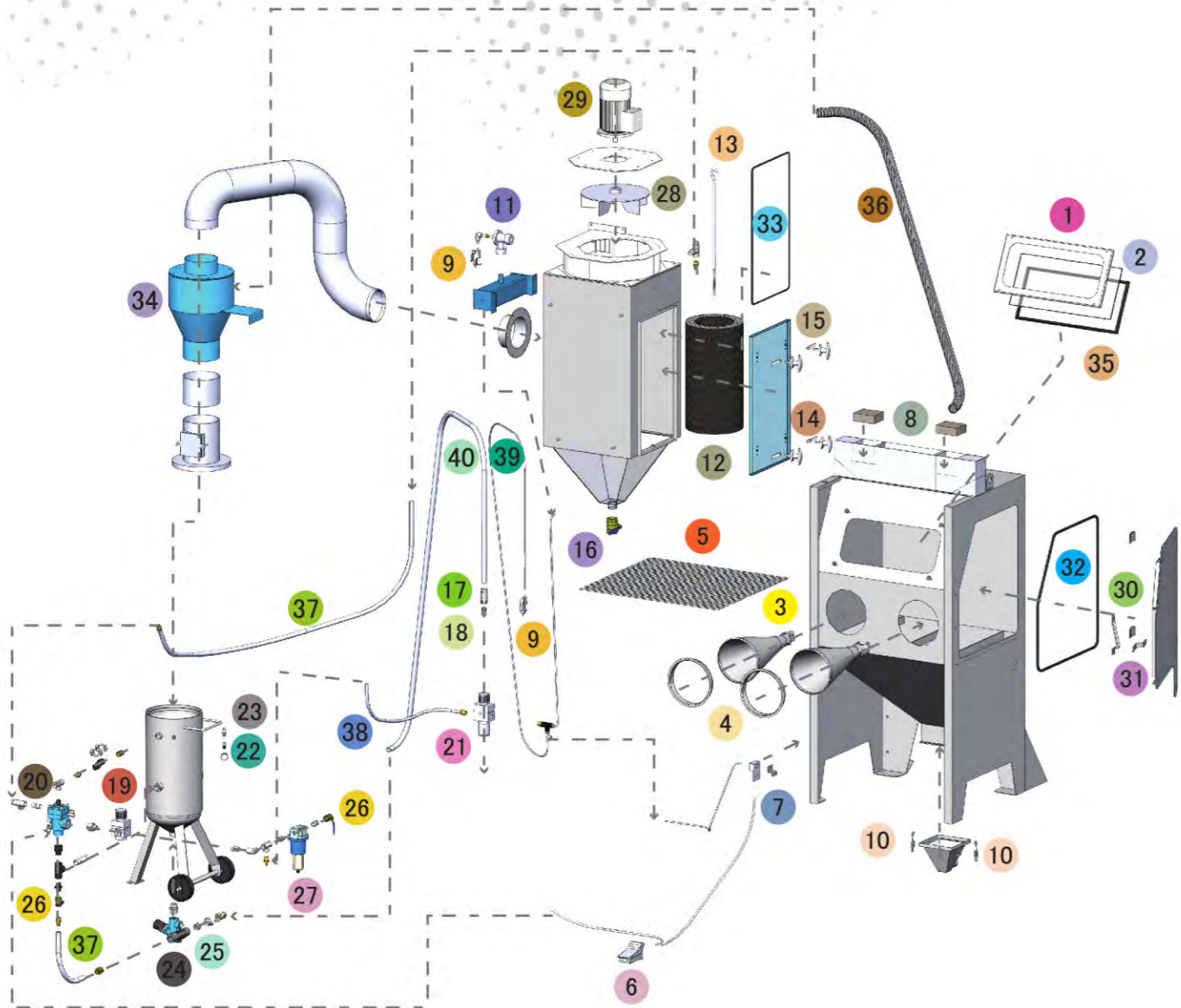
Cabinet Window Cover



Component Highlights



- | | | |
|------------------------------------|--|---|
| 1 Clean Air Induction Vents | 9 Moisture Separator | 17 Tungsten Carbide Pressure Blast Nozzle |
| 2 Cyclone Separation System | 10 Fina II Abrasive Metering Valve | 18 Quick Change Window Frame |
| 3 Air Blow Down Gun | 11 Foot Pedal Activation | 19 Large View Safety Glass Window |
| 4 Oversize Particle Clean Out Door | 12 Quick Release Abrasive Clean Out Hopper | 20 Dust Collector Filter Cartridge |
| 5 Pressure Blast Pot System | 13 Dust Collector Drain Out Valve | 21 Reverse Pulse Jet Cartridge Dust Collector |
| 6 Safety Pressure Relief Valve | 14 Safety Door Interlock System | 22 Dust Collector Motor and Fan Assembly |
| 7 UniFlo Remote Control Valve | 15 Durable Woven Wire Work Floor | |
| 8 Pressure Regulator | 16 10" Diameter Operator Blasting Gloves | |



Assembly

| Stock Code | Description | Weight |
|----------------|-------------------------------|----------------|
| BEC-CA-PB-0018 | PB500P Blast Cabinet Assembly | 430kg (948lbs) |

Optional Accessories

| Stock Code | Description | Stock Code | Description |
|----------------|-----------------------------|----------------|---|
| BAC-CA-PB-0427 | Fixed Turntable | BAC-CA-PB-0428 | Rubber Lined Cabinet |
| BAC-CA-PB-0241 | Dust Collector Silencer Kit | BAC-CA-PB-0277 | Cabinet Gun Stand |
| BAC-CA-PB-0455 | Foot Valve Guard | BAC-DC-0002-01 | Single Cartridge Auto-Reverse Pulse Kit |

Parts List

| Item | Stock Code | Description | Qty |
|------|----------------|---|------|
| 1 | YAC-CA-PB-0153 | Window Frame | 1 |
| 2 | BAC-CA-PB-0156 | Rectangular Window | 1 |
| 3 | BAC-GL-PB-0003 | 10" Ø Cabinet Rubber Gloves | 1PR |
| 4 | BAC-CA-PB-0157 | Cabinet Entry Ring | 2 |
| 5 | BAC-CA-PB-0155 | Cabinet Floor Mesh | 1 |
| 6 | BAC-CA-PB-0086 | Foot Valve Spring Return | 1 |
| 7 | YAC-CA-PB-0219 | Interlock Plunger | 1 |
| 8 | BAC-CA-PB-0140 | Air Entry Filter | 4 |
| 9 | YAC-CA-PB-0145 | 1/4" Blow Off Gun | 2 |
| 10 | YAC-FN-PB-0041 | Toggle Catch | 2 |
| 11 | BAC-DC-PB-0007 | Pulse Valve | 1 |
| 12 | BAC-DF-PB-0002 | Filter Cartridge - Size 2 | 1 |
| 13 | BAC-DC-PB-0031 | Hanger Rod | 1 |
| 14 | YAC-CA-PB-0146 | Handle | 4 |
| 15 | YAC-CA-PB-0205 | Handle Tongue | 4 |
| 16 | BAC-PF-PB-0008 | 38mm (1-1/2") Ball Valve | 1 |
| 17 | BAC-NZ-PB-0021 | NNH-0 Nylon Nozzle Holder | 1 |
| 18 | BAC-NZ-PB-0054 | Blast Nozzle ATN-3S Alum/Tungsten Short | 1 |
| 19 | BAC-AF-PB-0153 | 19mm (3/4") Pressure Regulator With Gauge | 1 |
| 20 | BAC-RC-PB-0014 | UniFlo Valve Assembly With Fittings | 1 |
| 21 | BAC-AF-PB-0048 | 9.5mm 3/8" Filter Regulator With Gauge | 1 |
| 22 | BAC-PF-PB-0030 | 6mm (1/4")-125 PSI Pressure Relief Valve | 1 |
| 23 | BAC-PF-PB-0031 | 6mm (1/4") Pressure Gauge - Rear Entry | 1 |
| 24 | BAC-VA-0397-00 | Fina II Valve 1/2"M X 3/4"F | 1 |
| 25 | BAC-HC-0084-00 | STC-0 Steel Threaded Pot Coupling | 1 |
| 26 | BAC-PF-PB-0004 | 19mm (3/4") Ball Valve | 2 |
| 27 | BAC-AF-PB-0057 | 19mm (3/4") Port Moisture Separator | 1 |
| 28 | YAC-CA-PB-0183 | Fan Impellor - 360CFM Aluminium | 1 |
| 29 | YAC-CA-PB-0144 | 1.5kw 415V/50Hz Motor | 1 |
| 30 | YAC-CA-PB-0440 | Door Latch | 1 |
| 31 | YAC-CA-PB-0439 | Handle | 1 |
| 32 | BAC-CA-PB-0164 | Cabinet Door Seal | 1 |
| 33 | BAC-CA-PB-0406 | Dust Collector Door Seal | 1 |
| 34 | BAC-CA-0317-02 | Rubber Lined Cyclone | 1 |
| 35 | BAC-CA-PB-0161 | Cabinet Window Seal | 2 |
| 36 | BAC-CA-0596-00 | Recovery Hose | 1 |
| 37 | YAC-BF-PB-0041 | Hose-Air/Water Delivery 19mmIDx29mmOD | 2M |
| 38 | BAC-CA-PB-0315 | Blast Hose | 1 |
| 39 | YAC-PF-PB-0125 | 1/4" NB Air Hose | 1.5M |
| 40 | BAC-CA-0591-00 | Blast Hose | 1 |

Technical Data



- Optional Turntable Load:**
 250kg (551lbs)
- Internal Size:**
 900mm (35") Wide 783mm (31") Deep
 730mm (29") High
- Door Size:**
 645mm (25") Wide 730mm (29") High
- Air Consumption:**
 68m³/hr (40cfm) @ 550kPa (80psi)
- Blast Nozzle Size:**
 BAC-NZ-PB-0054
 Nozzle ATN-3S Orifice 3/16" - 4.8mm
- Cabinet Light:**
 2 x 18 Watt 230V 50Hz
- Cabinet Overall Dimension:**
 1620mm (64") Wide 1460mm (58") Deep
 2220mm (88") High
- Recommended Floor Area:**
 2800mm (110") Wide 2300mm (91") Deep
- Window Size:**
 600mm (24") Wide 250mm (10") High
- Air Supply Line:**
 19mm (3/4")
- Electrical Power:**
 1.5Kw (2hp) 415VAC 50Hz 2 Pole 3 Phase

