

PB500ES Blast Cabinet



Product Features

The PB 500ES is a light-duty blast cabinet that offers an economical solution for low volume production blasting applications. It is usable with a wide range of media, including:

- Chilled Iron Grit.
- Aluminium Oxide.
- Glass Beads.
- Garnet.
- Steel Grit.

- ▶ Safety door interlock.
- ▶ Integral sock-type dust collector to maintain visibility.
- ▶ Heavy duty, wear resistant rubber gloves.
- ▶ Quick-change laminated glass viewing window – no tools required.
- ▶ Fully adjustable abrasive feed tee.
- ▶ Compatible with virtually any abrasive type.
- ▶ Compressed air regulator and gauge included.
- ▶ High performance Delta suction blast gun.

Common Applications

- ▶ De-scale and de-rust metal.
- ▶ Remove paint and coatings.
- ▶ Remove burrs, flashings and sand from castings and moldings.
- ▶ Decorative finishing of non-ferrous metals.
- ▶ Stone and glass etching.
- ▶ Mold cleaning.

Complementary Products



Delta GDF Manual Gun



Delta SNH Auto Gun



Delta SNH Manual Gun



Delta GDF Auto Gun



AER85 Blaster



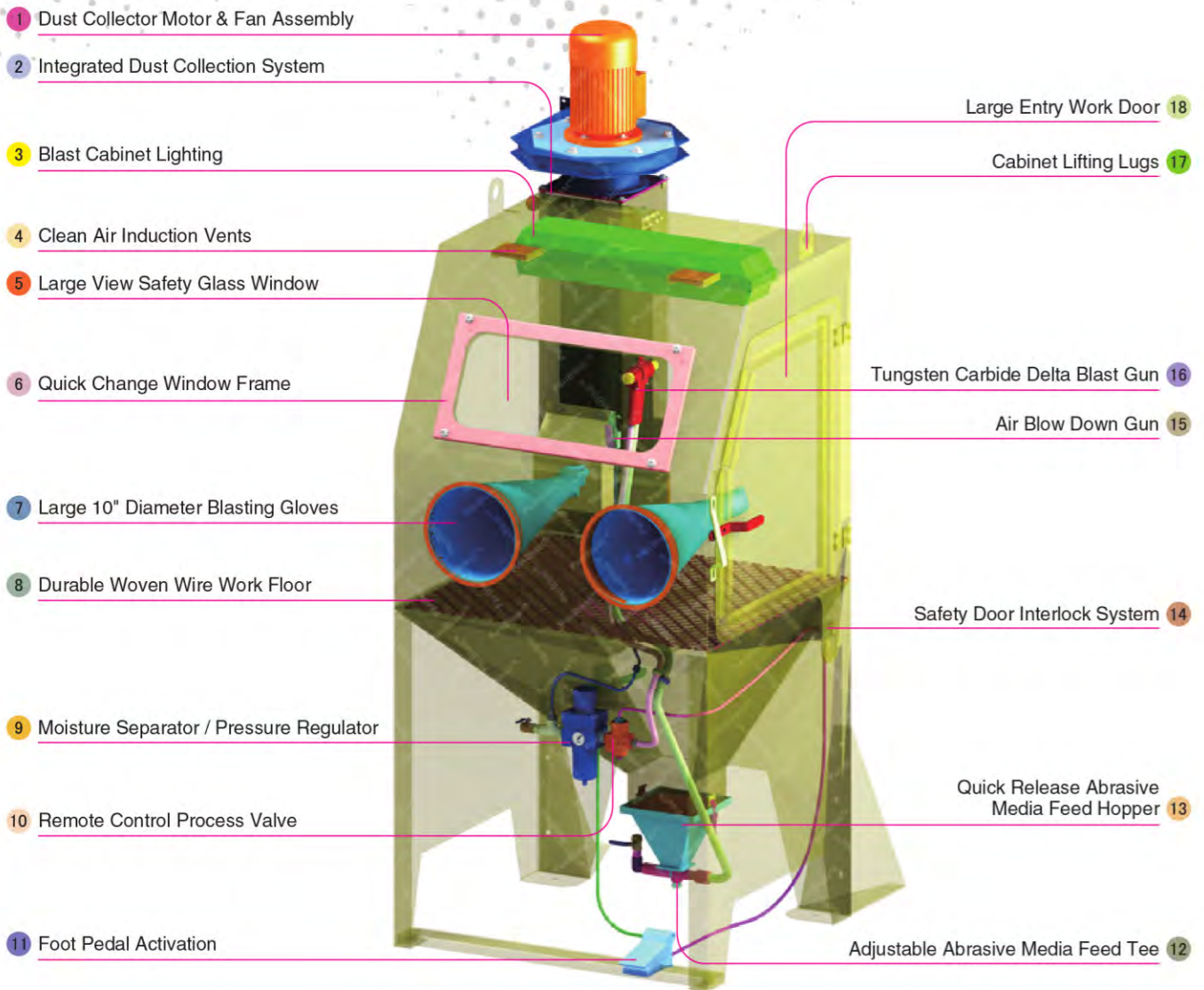
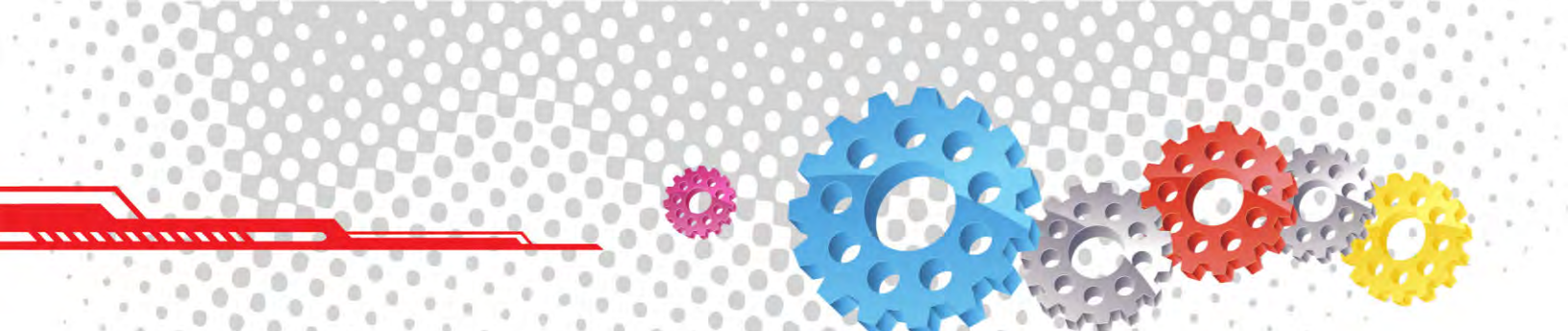
Moisture Separator



Cabinet Window Cover



Pow Air Vac



1 Dust Collector Motor & Fan Assembly

2 Integrated Dust Collection System

3 Blast Cabinet Lighting

4 Clean Air Induction Vents

5 Large View Safety Glass Window

6 Quick Change Window Frame

7 Large 10" Diameter Blasting Gloves

8 Durable Woven Wire Work Floor

9 Moisture Separator / Pressure Regulator

10 Remote Control Process Valve

11 Foot Pedal Activation

Large Entry Work Door 18

Cabinet Lifting Lugs 17

Tungsten Carbide Delta Blast Gun 16

Air Blow Down Gun 15

Safety Door Interlock System 14

Quick Release Abrasive Media Feed Hopper 13

Adjustable Abrasive Media Feed Tee 12

Component Highlights



1 Dust Collector Motor & Fan Assembly

2 Integrated Dust Collection System

3 Blast Cabinet Lighting

4 Clean Air Induction Vents

5 Large View Safety Glass Window

6 Quick Change Window Frame

7 Large 10" Diameter Blasting Gloves

8 Durable Woven Wire Work Floor

9 Moisture Separator / Pressure Regulator

10 Remote Control Process Valve

11 Foot Pedal Activation

12 Adjustable Abrasive Media Feed Tee

13 Quick Release Abrasive Media Feed Hopper

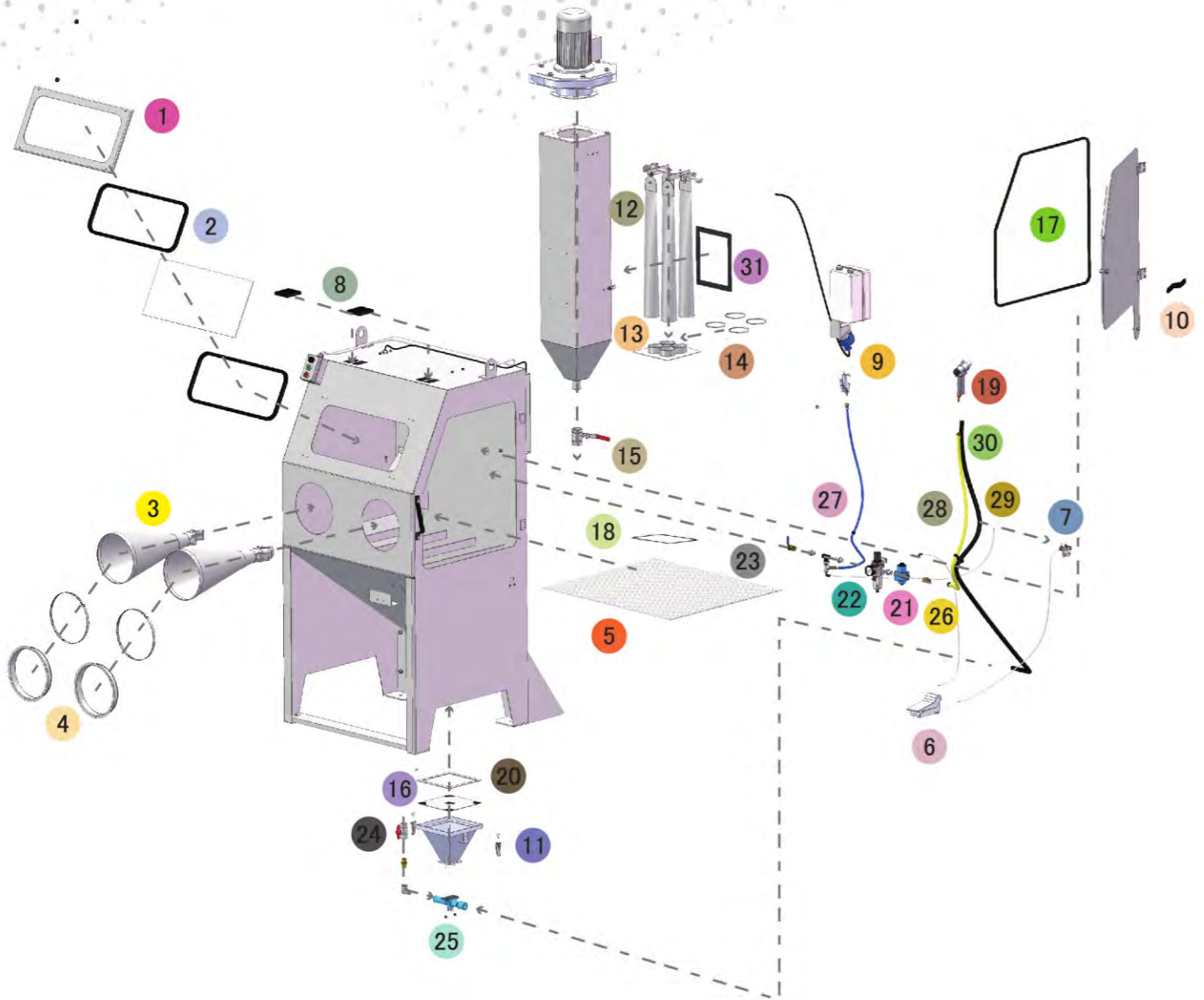
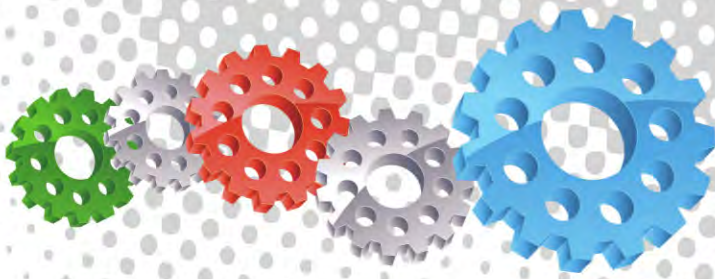
14 Safety Door Interlock System

15 Air Blow Down Gun

16 Tungsten Carbide Delta Blast Gun

17 Cabinet Lifting Lugs

18 Large Entry Work Door



Assembly

Stock Code	Description	Weight
BEC-CA-PB-0008	PB500ES Blast Cabinet Assembly	440kg (970lbs)

Optional Accessories

Stock Code	Description	Stock Code	Description
BAC-CA-PB-0427	Fixed Turntable	BAC-CA-PB-0428	Rubber Lined Cabinet
BAC-CA-PB-0277	Cabinet Gun Stand	BAC-CA-PB-0455	Foot Valve Guard
BAC-CA-PB-0335	Dust Collector Silencer Kit	BAC-DC-0002-01	Single Cartridge Auto-Reverse Pulse Kit

Parts List

Item	Stock Code	Description	Qty
1	BAC-CA-PB-0156	Rectangular Window	1
2	BAC-CA-PB-0161	Cabinet Window Seal	2
3	BAC-GL-PB-0003	10" Ø Cabinet Rubber Gloves	1PR
4	BAC-CA-PB-0157	Cabinet Entry Ring	2
5	BAC-CA-PB-0155	Cabinet Floor Mesh	1
6	BAC-CA-PB-0086	Foot Valve Spring Return	1
7	YAC-CA-PB-0219	Interlock Plunger	1
8	BAC-CA-PB-0158	Air Entry Filter	2
9	YAC-CA-PB-0145	1/4" Blow Off Gun	1
10	YAC-CA-PB-0439	Handle	1
11	YAC-FN-PB-0041	Toggle Catch	2
12	BAC-DF-PB-0012	Dust Bag - 80mm DIA	4
13	YAC-CA-PB-0270	Toggle Clamp & Latch Set	1
14	YAC-FN-PB-0144	Hose Clamp	4
15	BAC-PF-PB-0008	38mm (1-1/2") Ball Valve	1
16	BAC-CA-PB-0117	PB500/PB1000 Hopper-Screen Detail	1
17	BAC-CA-PB-0164	Cabinet Door Seal	1
18	YAC-CA-0474-00	Rubber Seal	0.3M
19	BAC-BG-PB-0056	Delta-M Gun GDF 1/8 x 1/4 Assembly	1
20	YAC-CA-PB-0106	Hopper Gasket	1
21	BAC-RC-PB-0142	Sola 5 Inlet Valve Sub Assembly	1
22	BAC-AF-PB-0048	9.5mm (3/8") Filter Regulator With Gauge	1
23	BAC-PF-PB-0021	10mm (3/8") Ball Valve	1
24	YAC-PF-PB-0026	PVC Ball Valve	1
25	BAC-CA-PB-0220	Feed Tee Assembly	1
26	YAC-PF-PB-0224	Hose Barb	1
27	YAC-PF-PB-0125	1/4" NB Air Hose	1.5M
28	BAC-AF-PB-0164	Air Hose 10mm 250PSI Impact Blue	1.5M
29	BAC-CA-0586-00	Abrasives Hose	1
30	YAC-FN-PB-0263	O-Clip	2
31	BAC-CA-PB-0405	Dust Collector Door Seal	1

Technical Data



- Optional Turntable Load:**
 250kg (551lbs)
- Internal Size:**
 900mm (35") Wide 783mm (31") Deep
 730mm (29") High
- Door Size:**
 645mm (25") Wide 730mm (29") High
- Air Consumption:**
 36m³/hr (21cfm) @550kPa (80psi)
- Suction Gun / Nozzle Size:**
 BAC-BG-PB-0056 Delta Manual Gun 1/8" x 1/4"
- Cabinet Light:**
 2 x 18 Watt 230V 50Hz
- Cabinet Overall Dimension:**
 1000mm (40") Wide 1130mm (45") Deep
 2220mm (88") High
- Recommended Floor Area:**
 2300mm (91") Wide 2100mm (83") Deep
- Window Size:**
 600mm (24") Wide 250mm (10") High
- Air Supply Line:**
 10mm (3/8")
- Electrical Power:**
 0.55Kw (0.75hp) 230VAC 50Hz 2 Pole 1 Phase

