

PB2000P Blast Cabinet



Product Features

The PB2000P Heavy Duty Pressure Blast Cabinet is a highly efficient, general purpose, industrial blast cabinet, compatible with a wide range of abrasive media, including:

- * Chilled Iron Grit
- * Aluminium Oxide
- * Garnet
- * Cast Steel Grit
- * Glass Beads
- * Steel Shot

- ▶ Up to three times faster than suction blast systems.
- ▶ 31 liters (1.1ft³) blast pot.
- ▶ Cyclone type abrasive separator cleans abrasive during use.
- ▶ Safety door interlock.
- ▶ Integral dry twin cartridge reverse pulse dust collector for clear visibility.
- ▶ Dual heavy duty wear resistant rubber gloves.
- ▶ Quick-change dual laminated glass viewing windows - no tools required.
- ▶ Fina II abrasive metering valve.
- ▶ Compressed air regulator and gauge.
- ▶ Standard air blow down gun.

Common Applications

- ▶ De-scale and de-rust metal.
- ▶ Remove paint and coatings.
- ▶ Remove burrs, flashings and sand from castings and moldings.
- ▶ Decorative finishing of non-ferrous metals.
- ▶ Stone and glass etching.
- ▶ Mold cleaning.

Complementary Products



ATN-S Blast Nozzles



ABN-S Blast Nozzles



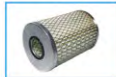
ATN-M Blast Nozzles



AER85 Blaster



Pow Air Vac



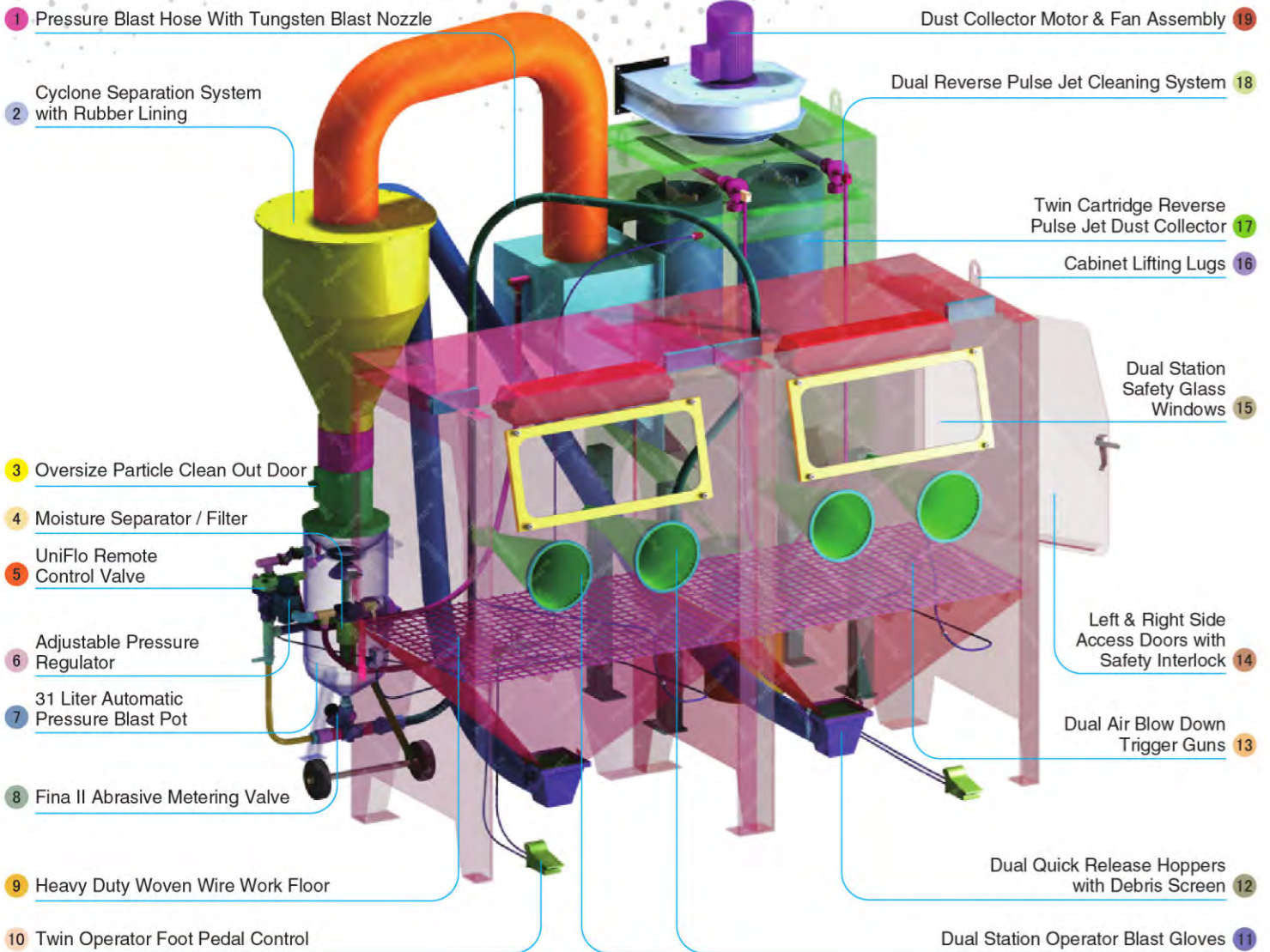
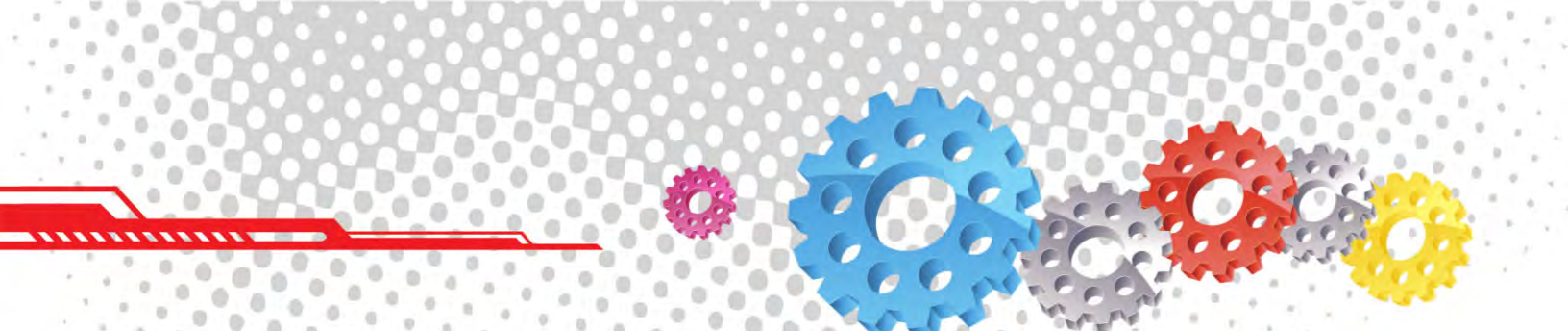
Filter Cartridge



Moisture Separator



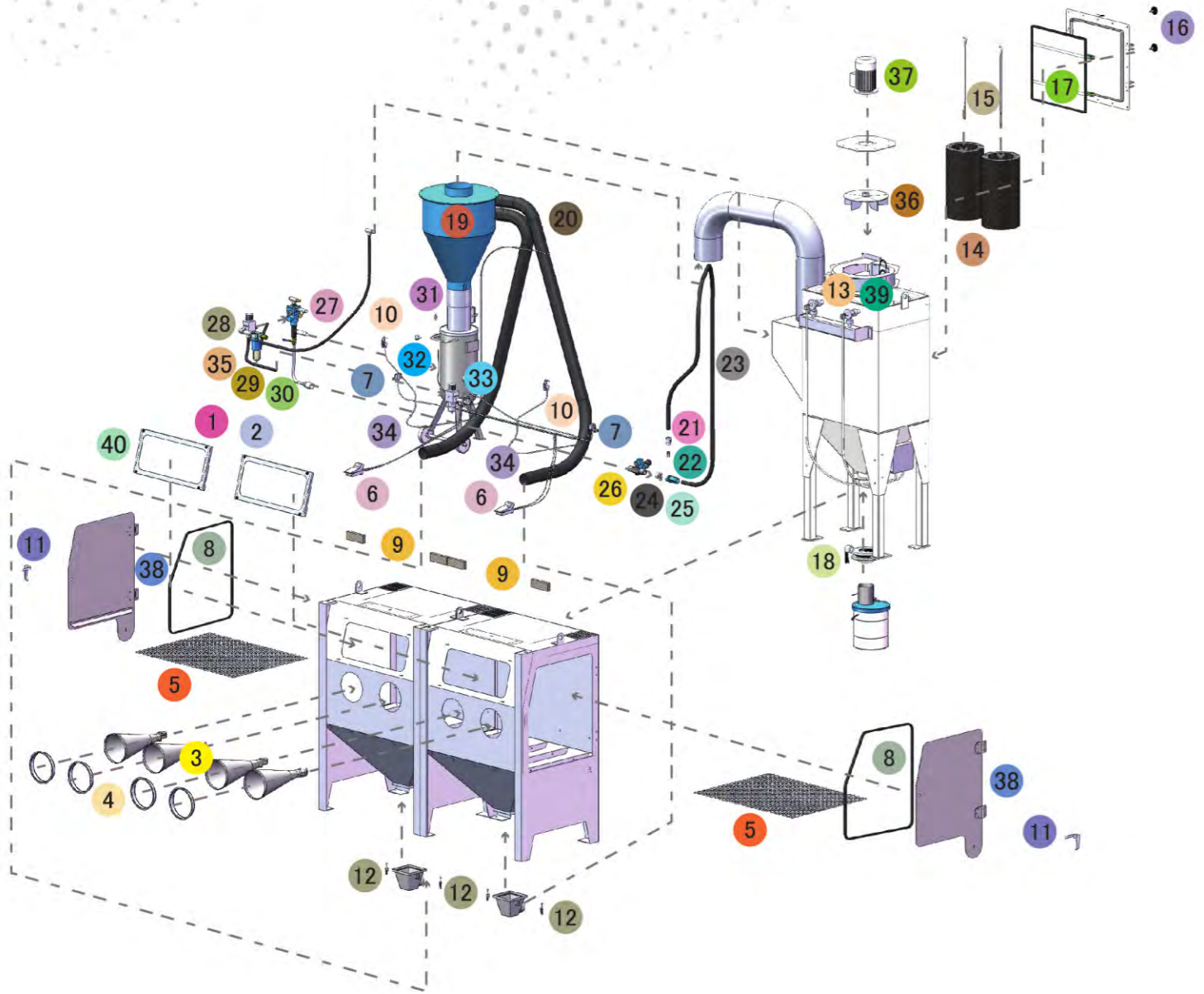
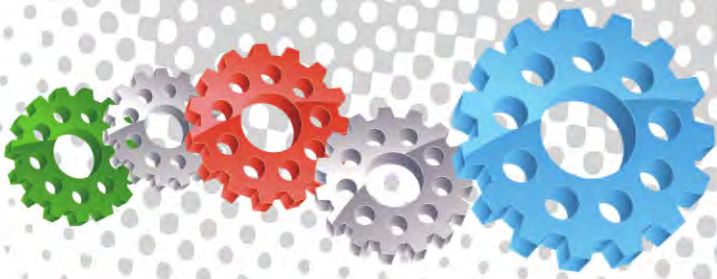
Cabinet Window Cover



Component Highlights



- | | | |
|--|---|--|
| 1 Pressure Blast Hose With Tungsten Blast Nozzle | 8 Fina II Abrasive Metering Valve | 15 Dual Station Safety Glass Windows |
| 2 Cyclone Separation System with Rubber Lining | 9 Heavy Duty Woven Wire Work Floor | 16 Cabinet Lifting Lugs |
| 3 Oversize Particle Clean Out Door | 10 Twin Operator Foot Pedal Control | 17 Twin Cartridge Reverse Pulse Jet Dust Collector |
| 4 Moisture Separator / Filter | 11 Dual Station Operator Blast Gloves | 18 Dual Reverse Pulse Jet Cleaning System |
| 5 UniFlo Remote Control Valve | 12 Dual Quick Release Hoppers with Debris Screen | 19 Dust Collector Motor & Fan Assembly |
| 6 Adjustable Pressure Regulator | 13 Dual Air Blow Down Trigger Guns | |
| 7 31 Liter Automatic Pressure Blast Pot | 14 Left & Right Side Access Doors with Safety Interlock | |



Assembly

Stock Code	Description	Weight
BEC-CA-PB-0013	PB2000P Blast Cabinet Assembly	1170Kg (2579lbs)

Optional Accessories

Stock Code	Description	Stock Code	Description
BAC-CA-PB-0244	Fixed Turntable Kit	BAC-CA-PB-0280	Rubber Lined Cabinet Kit
BAC-CA-PB-0277	Cabinet Gun Stand	BAC-CA-PB-0292	Operator Sound Kit
BAC-CA-PB-0241	Dust Collector Silencer Kit	BAC-CA-PB-0247	Track & Trolley - LH
BAC-CA-PB-0455	Foot Valve Guard	BAC-CA-PB-0180	Track & Trolley - RH
BAC-CA-PB-0040	Tumble Basket Ø300mm x 325mm	BAC-CA-PB-0243	Tumble Basket Ø350mm x 375mm

Parts List

Item	Stock Code	Description	Qty
1	YAC-CA-PB-0101	Window Frame	2
2	BAC-CA-PB-0137	Rectangular Window	2
3	BAC-GL-PB-0003	10" Ø Cabinet Rubber Gloves	2PR
4	BAC-CA-PB-0157	Cabinet Entry Ring	4
5	BAC-CA-PB-0126	Cabinet Floor Mesh	2
6	BAC-CA-PB-0086	Foot Valve Spring Return	2
7	YAC-CA-PB-0219	Interlock Plunger	2
8	BAC-CA-PB-0178	Cabinet Door Seal	2
9	BAC-CA-PB-0140	Air Entry Filter	4
10	YAC-CA-PB-0145	1/4" Blow Off Gun	2
11	YAC-CA-PB-0138	Latch	2
12	YAC-FN-PB-0041	Toggle Catch	4
13	YAC-DC-0053-00	Pulse Valve	2
14	BAC-DF-PB-0002	Filter Cartridge - Size 2	2
15	YAC-DC-PB-0005	700mm Hanger Rod	2
16	YAC-FN-0383-00	Female Star Knob	2
17	BAC-DC-0038-00	Dust Collector Access Door Seal	1
18	BAC-PF-0407-00	Butterfly Valve - 5"	1
19	BAC-CA-PB-0283	PB2000HD Rubber Lined Cyclone	1
20	BAC-CA-0609-00	Recovery Hose	2
21	YAC-NZ-PB-0081	ANH 1/2 Aluminium Nozzle Holder Detail	1
22	BAC-NZ-PB-0054	Blast Nozzle ATN-3S Alum/Tungsten Short	1
23	BAC-CA-0594-00	Blast Hose	1
24	BAC-HC-PB-0057	NTC-1/2 Nylon Threaded Pot Coupling	1
25	BAC-HC-PB-0054	NHC-1/2 Nylon Hose Coupling	1
26	BAC-VA-0397-00	Fina II Valve 1/2"M X 3/4"F	1
27	BAC-RC-PB-0014	UniFlo Valve Assembly With Fittings	1
28	BAC-AF-PB-0153	19mm (3/4") Pressure Regulator With Gauge	1
29	BAC-AF-PB-0057	19mm (3/4") Port Moisture Separator	1
30	BAC-PF-PB-0004	19mm (3/4") Ball Valve	2
31	BAC-PF-PB-0030	6mm (1/4")-125 PSI Pressure Relief Valve	1
32	BAC-PF-PB-0031	6mm (1/4") Pressure Gauge - Rear Entry	1
33	BAC-AF-PB-0048	9.5mm 3/8" Filter Regulator With Gauge	1
34	YAC-PF-PB-0125	1/4" NB Air Hose	2M
35	YAC-BF-PB-0041	Hose-Air/Water Delivery 19mmIDx29mmOD	3M
36	YAC-CA-PB-0183	Fan Impellor - 360CFM Aluminium	1
37	YAC-CA-PB-0142	230VAC 1PH 50HZ Motor	1
38	BAC-CA-PB-0296	Hinge Assembly	4
39	BAC-DC-0061-00	Pulse Timer 2-10 Stations	1
40	BAC-CA-PB-0141	Cabinet Window Seal	4

Technical Data



- Optional Turntable Load:**
 250kg (551lbs)
- Internal Size:**
 2000mm (79") Wide 920mm (36") Deep
 890mm (35") High
- Door Size:**
 755mm (30") Wide 855mm (34") High
- Air Consumption:**
 68m³/hr (40cfm) @ 550kPa (80psi)
- Blast Nozzle Size:**
 BAC-NZ-PB-0054
 Nozzle ATN-3S Orifice 3/16" - 4.8mm
- Cabinet Light:**
 4 x 18 Watt 230V 50Hz
- Cabinet Overall Dimension:**
 2496mm (99") Wide 1809mm (72") Deep
 2681mm (106") High
- Recommended Floor Area:**
 5600mm (221") Wide 3000mm (118") Deep
- Window Size:**
 2 x 750mm (30") Wide 300mm (12") High
- Air Supply Line:**
 19mm (3/4")
- Electrical Power:**
 4Kw (5hp) 415VAC 50HZ 2 Pole 3 Phase

