

PB2000HD Blast Cabinet



Product Features

The PB2000HD Heavy Duty Suction Blast Cabinet is a highly efficient, extra large capacity industrial blast cabinet, compatible with a wide range of abrasive media, including:

- Chilled Iron Grit.
- Aluminium Oxide.
- Glass Beads.
- Garnet.
- Steel Grit.

- ▶ Cyclone type abrasive separator cleans the abrasive during use.
- ▶ Safety door interlock.
- ▶ Integral dry cartridge reverse pulse dust collector for clear visibility.
- ▶ Heavy duty, wear resistant rubber gloves.
- ▶ Quick-change laminated glass viewing window - no tools required.
- ▶ Fully adjustable abrasive feed tee.
- ▶ Compressed air regulator and gauge.
- ▶ High performance Delta Suction Gun.
- ▶ Standard air blow down gun.

Common Applications

- ▶ De-scale and de-rust metal.
- ▶ Remove paint and coatings.
- ▶ Remove burrs, flashings and sand from castings and moldings.
- ▶ Decorative finishing of non-ferrous metals.
- ▶ Stone and glass etching.
- ▶ Mold cleaning.

Complementary Products



Delta GDF Manual Gun



Delta SNH Auto Gun



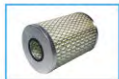
Delta SNH Manual Gun



Delta GDF Auto Gun



Pow Air Vac



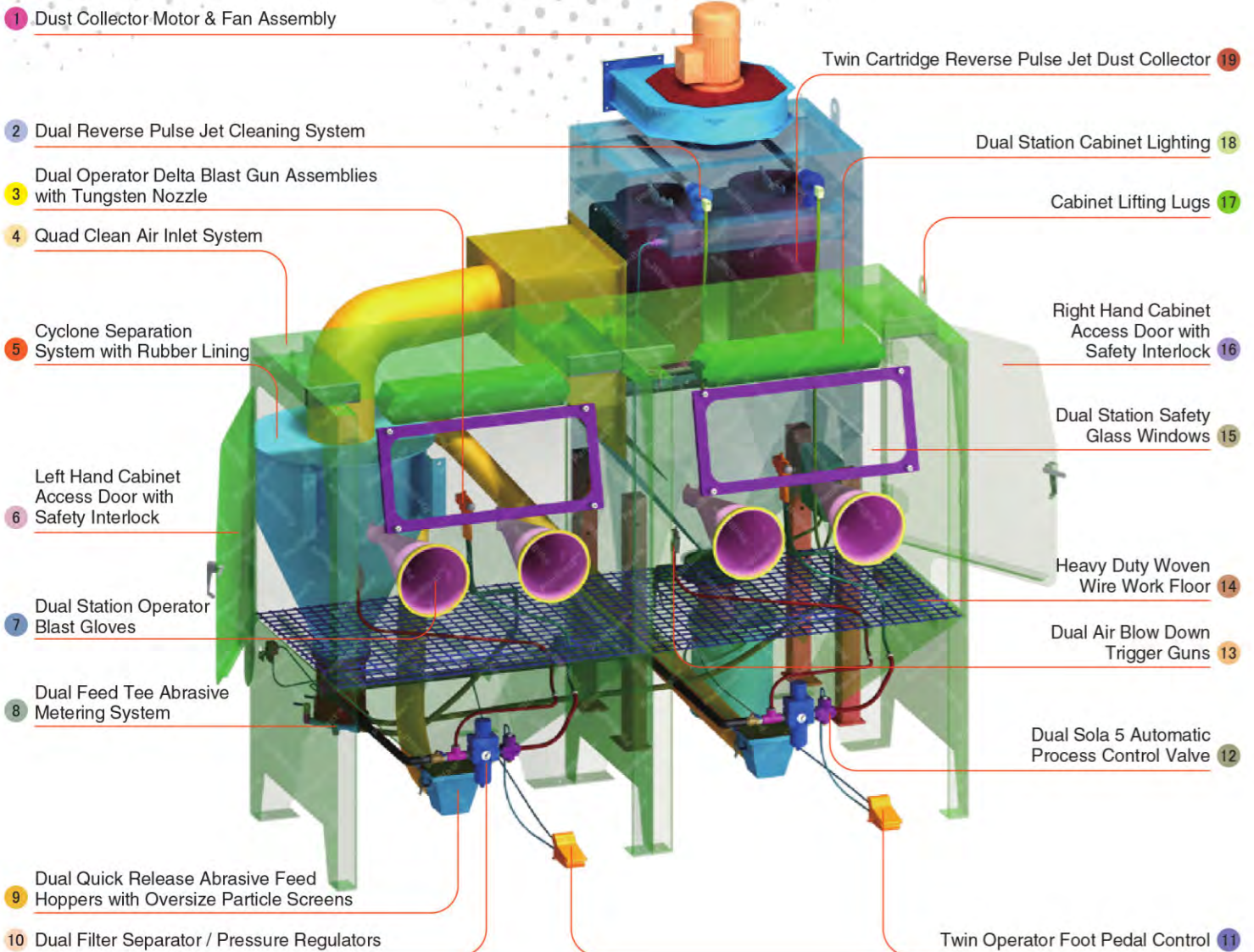
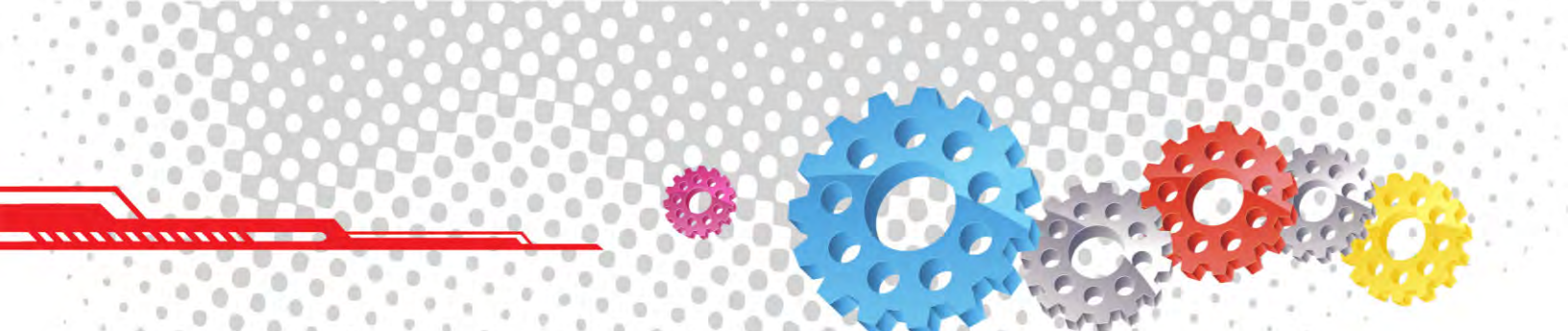
Filter Cartridge



Moisture Separator



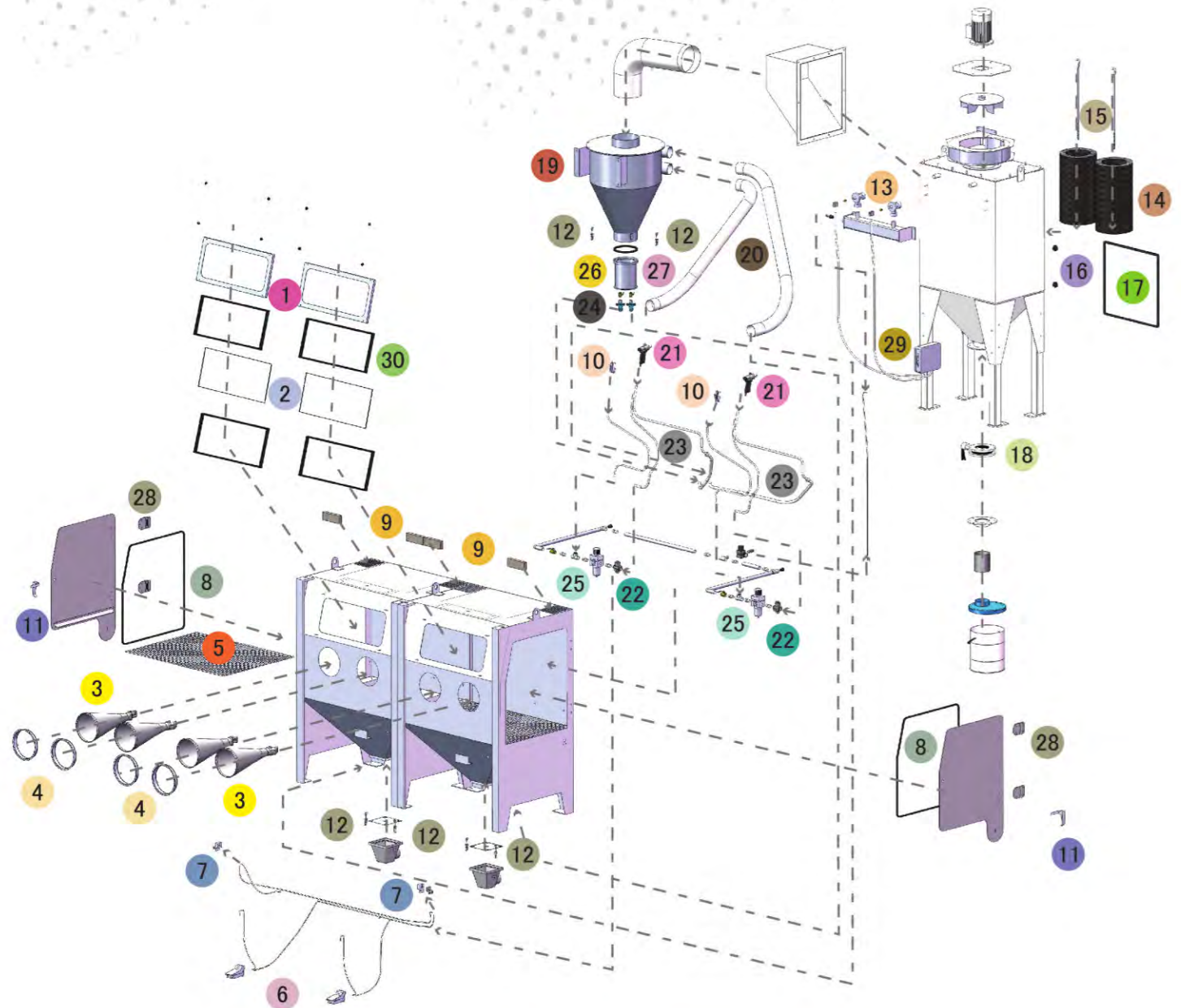
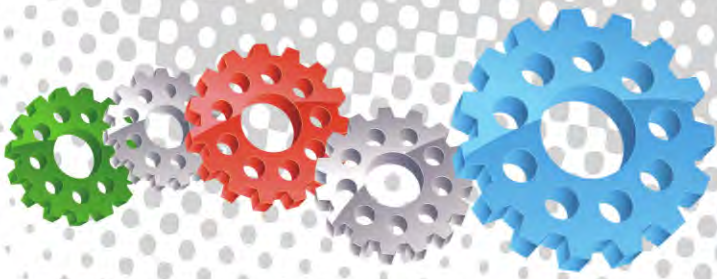
Cabinet Window Cover



Component Highlights



- | | | |
|---|---|---|
| 1 Dust Collector Motor & Fan Assembly | 8 Dual Feed Tee Abrasive Metering System | 15 Dual Station Safety Glass Windows |
| 2 Dual Reverse Pulse Jet Cleaning System | 9 Dual Quick Release Abrasive Feed Hoppers with Oversize Particle Screens | 16 Right Hand Cabinet Access Door with Safety Interlock |
| 3 Dual Operator Delta Blast Gun Assemblies with Tungsten Nozzle | 10 Dual Filter Separator / Pressure Regulators | 17 Cabinet Lifting Lugs |
| 4 Quad Clean Air Inlet System | 11 Twin Operator Foot Pedal Control | 18 Dual Station Cabinet Lighting |
| 5 Cyclone Separation System with Rubber Lining | 12 Dual Sola 5 Automatic Process Control Valve | 19 Twin Cartridge Reverse Pulse Jet Dust Collector |
| 6 Left Hand Cabinet Access Door with Safety Interlock | 13 Dual Air Blow Down Trigger Guns | |
| 7 Dual Station Operator Blast Gloves | 14 Heavy Duty Woven Wire Work Floor | |



Assembly

Stock Code	Description	Weight
BEC-CA-PB-0012	PB2000HD Blast Cabinet Assembly	800kg (1764lbs)

Optional Accessories

Stock Code	Description	Stock Code	Description
BAC-CA-PB-0244	Fixed Turntable Kit	BAC-CA-PB-0280	Rubber Lined Cabinet Kit
BAC-CA-PB-0277	Cabinet Gun Stand	BAC-CA-PB-0292	Operator Sound Kit
BAC-CA-PB-0241	Dust Collector Silencer Kit	BAC-CA-PB-0247	Track & Trolley - LH
BAC-CA-PB-0455	Foot Valve Guard	BAC-CA-PB-0180	Track & Trolley - RH
BAC-CA-PB-0040	Tumble Basket Ø300mm x 325mm	BAC-CA-PB-0243	Tumble Basket Ø350mm x 375mm

Parts List

Item	Stock Code	Description	Qty
1	YAC-CA-PB-0101	Window Frame	2
2	BAC-CA-PB-0137	Rectangular Window	2
3	BAC-GL-PB-0003	10" Ø Cabinet Rubber Gloves	2PR
4	BAC-CA-PB-0157	Cabinet Entry Ring	4
5	BAC-CA-PB-0126	Cabinet Floor Mesh	2
6	BAC-CA-PB-0086	Foot Valve Spring Return	2
7	YAC-CA-PB-0219	Interlock Plunger	2
8	BAC-CA-PB-0178	Cabinet Door Seal	2
9	BAC-CA-PB-0140	Air Entry Filter	4
10	YAC-CA-PB-0145	1/4" Blow Off Gun	2
11	YAC-CA-PB-0138	Latch	2
12	YAC-FN-PB-0041	Toggle Catch	6
13	YAC-DC-0053-00	Pulse Valve	2
14	BAC-DF-PB-0002	Filter Cartridge - Size 2	2
15	YAC-DC-PB-0005	700mm Hanger Rod	2
16	YAC-FN-0383-00	Female Star Knob	2
17	BAC-DC-0038-00	Dust Collector Access Door Seal	1
18	BAC-PF-0407-00	Butterfly Valve - 5"	1
19	BAC-CA-PB-0283	PB2000HD Rubber Lined Cyclone	1
20	BAC-CA-0598-00	Recovery Hose	1
21	BAC-BG-PB-0057	Delta-m Gun GDF 3/16 X 3/8 Assembly	2
22	BAC-RC-PB-0142	Sola5 Inlet Valve Sub Assembly	2
23	BAC-CA-0590-00	Abrasives Hose	1
24	BAC-CA-PB-0220	Feed Tee Assembly	2
25	BAC-AF-PB-0047	13mm (1/2") Filter Regulator With Gauge	2
26	BAC-PF-PB-0001	13mm (1/2") Ball Valve	2
27	BAC-CA-0353-00	Standard Cyclone Screen Seal	1
28	BAC-CA-PB-0296	Hinge Assembly	4
29	BAC-DC-0061-00	Pulse Timer 2-10 Stations	1
30	BAC-CA-PB-0141	Cabinet Window Seals	4

Technical Data



- Optional Turntable Load:**
 250kg (551lbs)
- Internal Size:**
 2000mm (79") Wide 920mm (36") Deep
 890mm (35") High
- Door Size:**
 755mm (30") Wide 855mm (34") High
- Air Consumption:**
 170m³/hr (100cfm) @550kPa (80psi)
- Suction Gun / Nozzle Size:**
 BAC-BG-PB-0057 x 2 pcs
 Delta Manual Gun 3/16" x 3/8"
- Cabinet Light:**
 4 x 18 Watt 230V 50Hz
- Cabinet Overall Dimension:**
 2496mm (99") Wide 1809mm (72") Deep
 2681mm (106") High
- Recommended Floor Area:**
 5600mm (221") Wide 3000mm (118") Deep
- Window Size:**
 2 x 750mm (30") Wide 300mm (12") High
- Air Supply Line:**
 19mm (3/4")
- Electrical Power:**
 4Kw (5hp) 415VAC 50Hz 2 Pole 3 Phase

