

# PB1500PMB/AU Blast Cabinet



## Product Features

The PB1500PMB Heavy Duty Pressure Blast Cabinet is a highly efficient, industrial blast cabinet, designed for use with plastic blasting media.

- ▶ Specially designed dump valve, allows blasting pressures as low as 5psi (35kPa).
- ▶ Optional magnetic grid separator removes ferrous contaminants from the plastic media.
- ▶ 28 liters (1ft<sup>3</sup>) blast pot with 60° cone for smooth abrasive flow.
- ▶ Cyclone type abrasive separator cleans abrasive during use.
- ▶ Safety door interlock.
- ▶ Integral dry cartridge reverse pulse dust collector maintains visibility.
- ▶ Heavy duty wear resistant rubber gloves.
- ▶ Quick-change laminated glass viewing window – no tools required.
- ▶ Fina II abrasive metering valve.
- ▶ Compressed air regulator and gauge.
- ▶ Standard air blow down gun.

## Common Applications

- ▶ De-scale and de-rust soft surfaces.
- ▶ Remove coatings without damaging substrate.
- ▶ De-burr, de-flash and clean delicate surfaces.
- ▶ Removal of release agents and contamination from moulds.

## Complementary Products



ATN-S Blast Nozzles



ABN-S Blast Nozzles



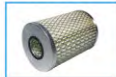
ATN-M Blast Nozzles



AER85 Blaster



Pow Air Vac



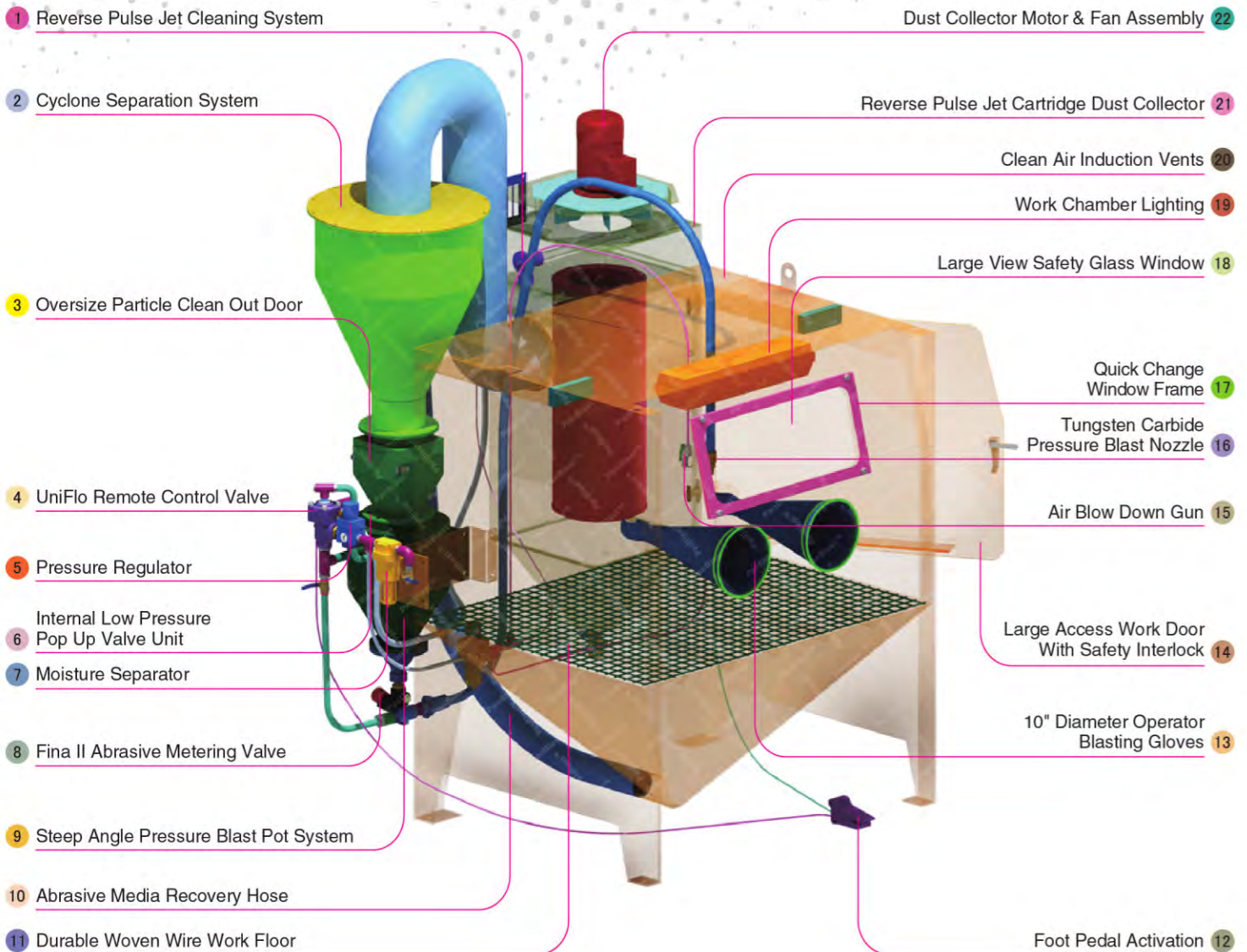
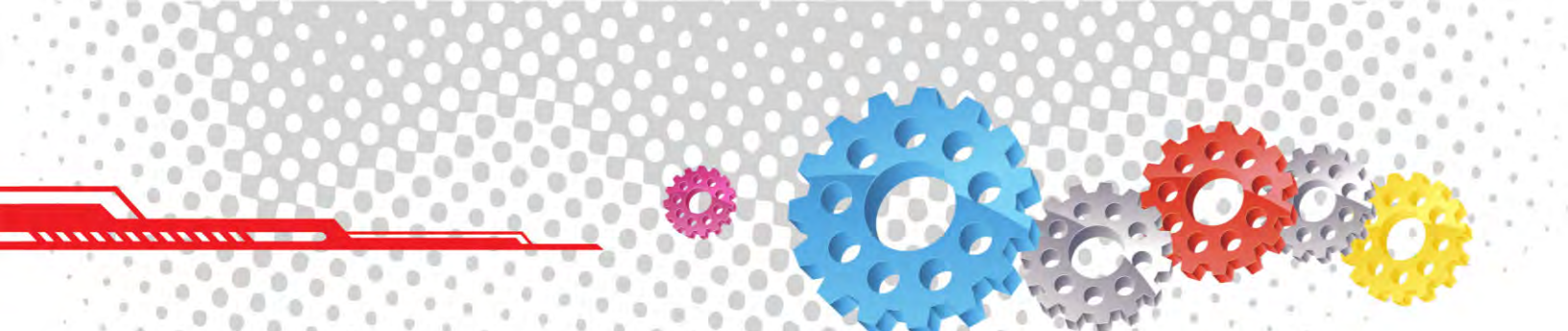
Filter Cartridge



Moisture Separator



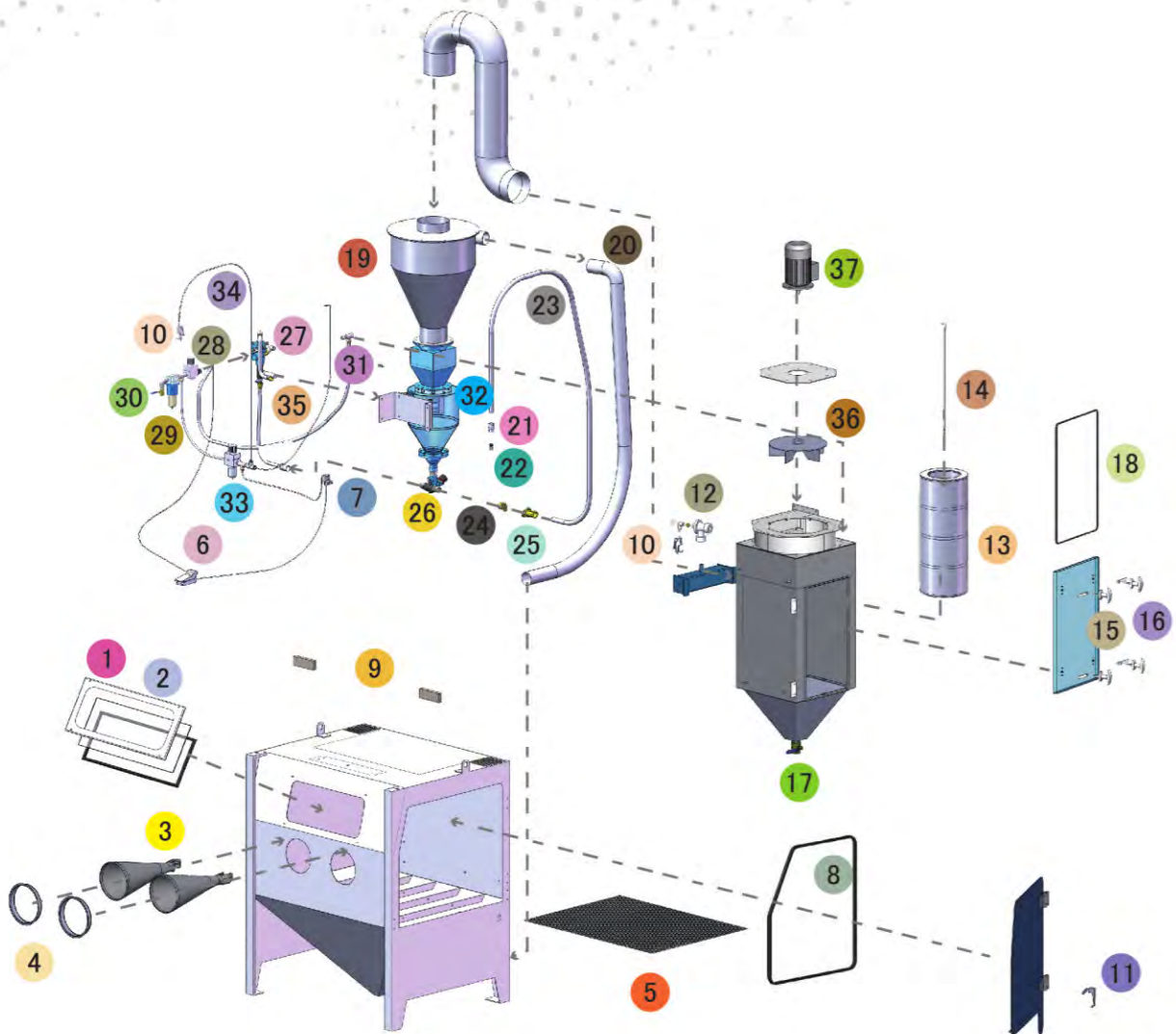
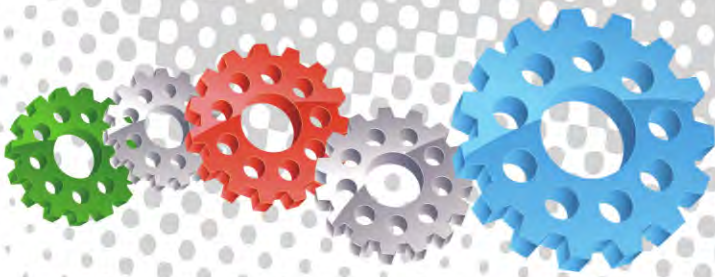
Cabinet Window Cover



## Component Highlights



- |   |   |   |
|---|---|---|
| 1 Reverse Pulse Jet Cleaning System       | 9 Steep Angle Pressure Blast Pot System         | 17 Quick Change Window Frame                  |
| 2 Cyclone Separation System               | 10 Abrasive Media Recovery Hose                 | 18 Large View Safety Glass Window             |
| 3 Oversize Particle Clean Out Door        | 11 Durable Woven Wire Work Floor                | 19 Work Chamber Lighting                      |
| 4 UniFlo Remote Control Valve             | 12 Foot Pedal Activation                        | 20 Clean Air Induction Vents                  |
| 5 Pressure Regulator                      | 13 10" Diameter Operator Blasting Gloves        | 21 Reverse Pulse Jet Cartridge Dust Collector |
| 6 Internal Low Pressure Pop Up Valve Unit | 14 Large Access Work Door With Safety Interlock | 22 Dust Collector Motor & Fan Assembly        |
| 7 Moisture Separator                      | 15 Air Blow Down Gun                            |   |
| 8 Fina II Abrasive Metering Valve         | 16 Tungsten Carbide Pressure Blast Nozzle       |   |



Notation: AU: Approved by Worksafe, Australia.

## Assembly

Stock Code	Description	Weight
BEC-CA-PB-0011	PB1500PMB/AU Pressure Cabinet Assembly	750kg (1654lbs)

## Optional Accessories

Stock Code	Description	Stock Code	Description
BAC-CA-PB-0212	Track & Trolley	BAC-CA-PB-0455	Foot Valve Guard
BAC-CA-PB-0243	Tumble Basket Ø350mm x 375mm	BAC-CA-PB-0292	Operator Sound Kit
BAC-CA-PB-0040	Tumble Basket Ø300mm x 325mm	BAC-CA-PB-0241	Dust Collector Silencer Kit
BAC-CA-PB-0244	Fixed Turntable Kit	BAC-CA-PB-0279	Rubber Lined Cabinet Kit
BAC-CA-PB-0277	Cabinet Gun Stand	BAC-DC-0002-01	Single Cartridge Auto-Reverse Pulse Kit
BAC-CA-PB-0287	Magnetic Grid Kit		

## Parts List

Item	Stock Code	Description	Qty
1	BAC-CA-PB-0137	Rectangular Window	1
2	BAC-CA-PB-0141	Cabinet Window Seal	2
3	BAC-GL-PB-0003	10" Ø Cabinet Rubber Gloves	1PR
4	BAC-CA-PB-0157	Cabinet Entry Ring	2
5	BAC-CA-PB-0318	Cabinet Floor Mesh	1
6	BAC-CA-PB-0086	Foot Valve Spring Return	1
7	BAC-CA-PB-0087	Door Interlock Valve	1
8	BAC-CA-PB-0319	Cabinet Door Seal	1
9	BAC-CA-PB-0324	Air Entry Filter	2
10	YAC-CA-PB-0145	1/4" Blow Off Gun	2
11	YAC-CA-PB-0138	Latch	1
12	BAC-DC-PB-0007	Pulse Valve	1
13	BAC-DF-PB-0005	Filter Cartridge - Size 3	1
14	BAC-DC-PB-0032	Hanger Rod	1
15	YAC-CA-PB-0146	Handle	4
16	YAC-CA-PB-0205	Handle Tongue	4
17	BAC-PF-PB-0008	38mm (1-1/2") Ball Valve	1
18	BAC-CA-PB-0436	Dust Collector Jumbo Door Seal	1
19	BAC-CA-PB-0434	PB1500PMB Rubber Lined Cyclone	1
20	BAC-CA-0600-00	Recovery Hose	1
21	YAC-NZ-PB-0081	ANH 1/2 Aluminium Nozzle Holder Detail	1
22	BAC-NZ-PB-0054	Blast Nozzle ATN-3S Alum/Tungsten Short	1
23	BAC-CA-0593-00	Blast Hose	1
24	BAC-HC-PB-0057	NTC-1/2 Nylon Threaded Pot Coupling	1
25	BAC-HC-PB-0054	NHC-1/2 Nylon Hose Coupling	1
26	BAC-VA-0397-00	Fina II Valve 1/2"M X 3/4"F	1
27	BAC-RC-PB-0014	UniFlo Valve Assembly With Fittings	1
28	BAC-AF-PB-0153	19mm (3/4") Pressure Regulator With Gauge	1
29	BAC-AF-PB-0057	19mm (3/4") Port Moisture Separator	1
30	BAC-PF-PB-0004	19mm (3/4") Ball Valve	2
31	YAC-FN-PB-0041	Toggle Catch	2
32	YAC-BF-0355-00	Air Spring Valve Assembly	1
33	BAC-AF-PB-0048	9.5mm 3/8" Filter Regulator With Gauge	1
34	YAC-PF-PB-0125	1/4" NB Air Hose	2M
35	YAC-BF-PB-0041	Hose-Air/Water Delivery 19mmIDx29mmOD	3M
36	YAC-CA-PB-0183	Fan Impellor - 360CFM Aluminium	1
37	YAC-CA-PB-0142	230VAC 1PH 50HZ Motor	1

## Technical Data



- Optional Turntable Load:**  
 250kg (551lbs)
- Internal Size:**  
 1400mm (55") Wide 1180mm (47") Deep  
 1040mm (41") High
- Door Size:**  
 1055mm (42") Wide 855mm (34") High
- Air Consumption:**  
 85m<sup>3</sup>/hr (50cfm) @550kPa (80psi)
- Blast Nozzle Size:**  
 BAC-NZ-PB-0054  
 Nozzle ATN-3S Orifice 3/16" - 4.8mm
- Cabinet Light:**  
 2 x 36 Watt 230V 50Hz
- Cabinet Overall Dimension:**  
 1914mm (76") Wide 1912mm (76") Deep  
 2738mm (108") High
- Recommended Floor Area:**  
 3700mm (146") Wide 2700mm (106") Deep
- Window Size:**  
 750mm (30") Wide 300mm (12") High
- Air Supply Line:**  
 19mm (3/4")
- Electrical Power:**  
 1.5Kw (2hp) 415VAC 50Hz 2 Pole 3 Phase

