

PB1500P Blast Cabinets



Product Features

The PB1500P Heavy Duty Pressure Blast Cabinet is a highly efficient, general purpose, industrial blast cabinet, compatible with a wide range of abrasive media, including:

- * Chilled Iron Grit
- * Aluminium Oxide
- * Garnet
- * Cast Steel Grit
- * Glass Beads
- * Steel Shot

- ▶ Up to three times faster than suction blast systems.
- ▶ 31 liters (1.1ft³) blast pot.
- ▶ Cyclone type abrasive separator cleans abrasive during use.
- ▶ Safety door interlock.
- ▶ Integral dry cartridge reverse pulse dust collector for clear visibility.
- ▶ Heavy duty wear resistant rubber gloves.
- ▶ Quick-change laminated glass viewing window - no tools required.
- ▶ Fina II abrasive metering valve.
- ▶ Compressed air regulator and gauge.
- ▶ Standard air blow down gun.

Common Applications

- ▶ De-scale and de-rust metal.
- ▶ Remove paint and coatings.
- ▶ Remove burrs, flashings and sand from castings and moldings.
- ▶ Decorative finishing of non-ferrous metals.
- ▶ Stone and glass etching.
- ▶ Mold cleaning.

Complementary Products



ATN-S Blast Nozzles



ABN-S Blast Nozzles



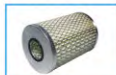
ATN-M Blast Nozzles



AER85 Blaster



Pow Air Vac



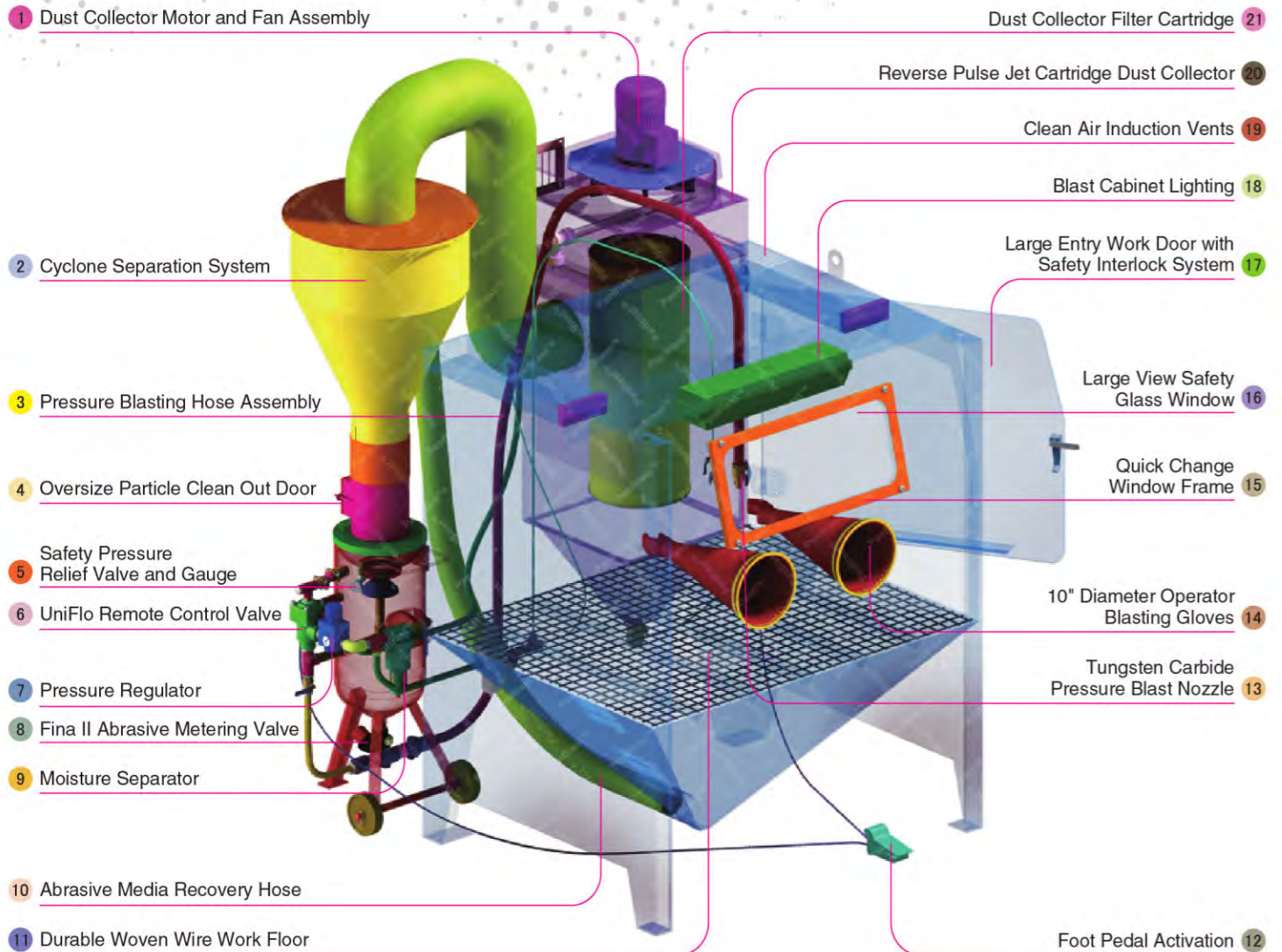
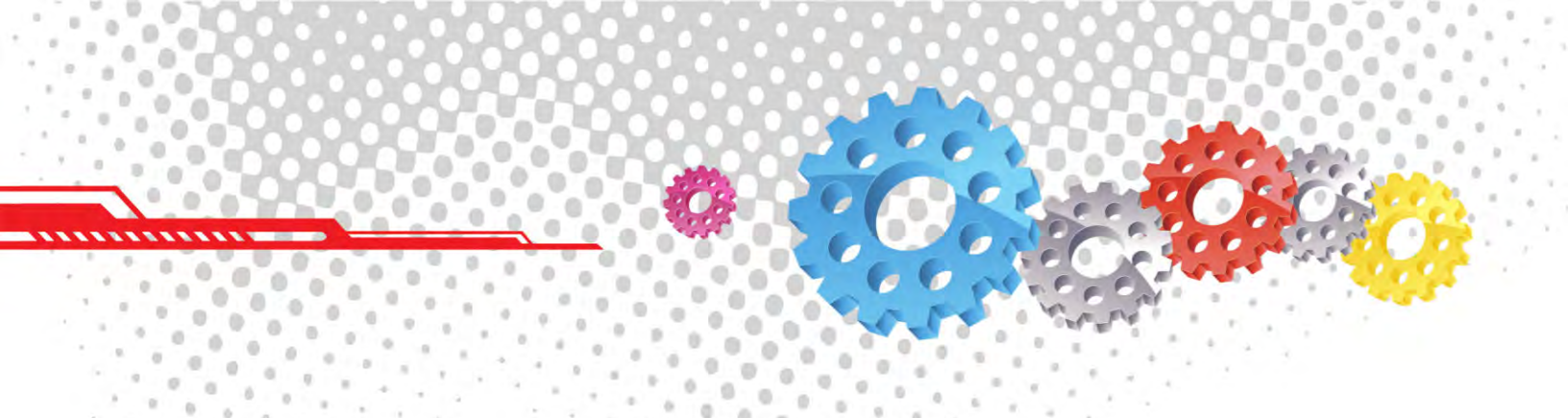
Filter Cartridge



Moisture Separator



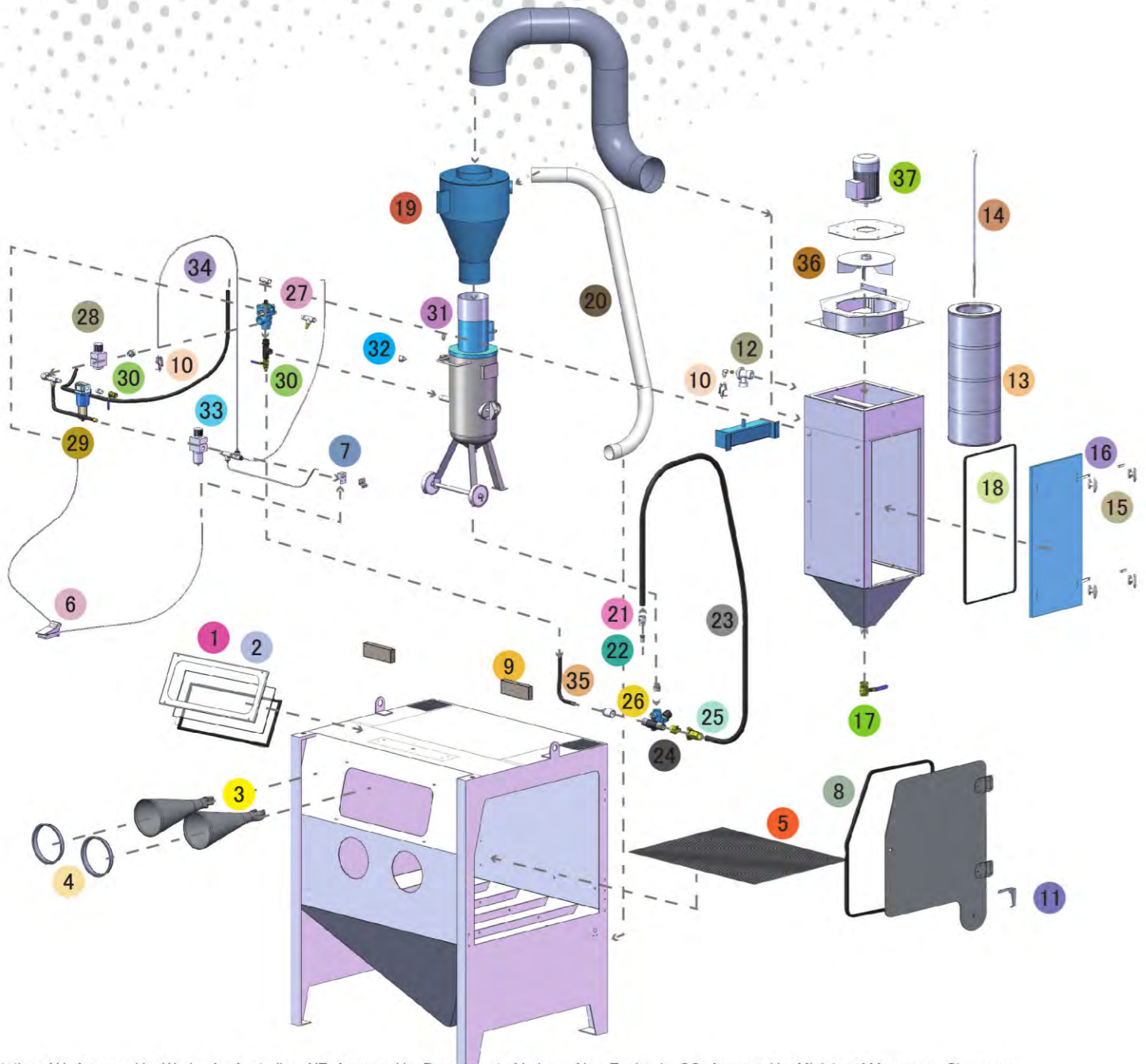
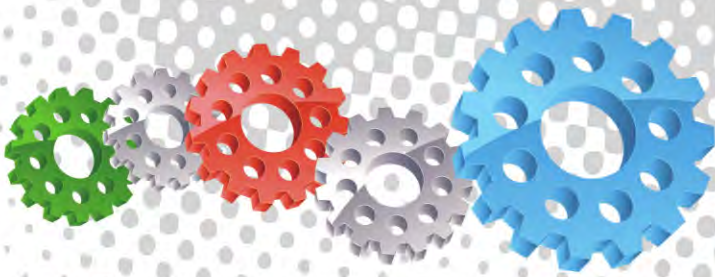
Cabinet Window Cover



Component Highlights



- | | | |
|--|---|---|
| 1 Dust Collector Motor and Fan Assembly | 8 Fina II Abrasive Metering Valve | 15 Quick Change Window Frame |
| 2 Cyclone Separation System | 9 Moisture Separator | 16 Large View Safety Glass Window |
| 3 Pressure Blasting Hose Assembly | 10 Abrasive Media Recovery Hose | 17 Large Entry Work Door with Safety Interlock System |
| 4 Oversize Particle Clean Out Door | 11 Durable Woven Wire Work Floor | 18 Blast Cabinet Lighting |
| 5 Safety Pressure Relief Valve and Gauge | 12 Foot Pedal Activation | 19 Clean Air Induction Vents |
| 6 UniFlo Remote Control Valve | 13 Tungsten Carbide Pressure Blast Nozzle | 20 Reverse Pulse Jet Cartridge Dust Collector |
| 7 Pressure Regulator | 14 10" Diameter Operator Blasting Gloves | 21 Dust Collector Filter Cartridge |



Notation: AU: Approved by Worksafe, Australia. NZ: Approved by Department of Labour, New Zealand. SG: Approved by Ministry of Manpower, Singapore.

Assemblies

Stock Code	Description	Weight
BEC-CA-PB-0010	PB1500P/AU Pressure Cabinet Assembly	800kg (1764lbs)
BEC-CA-0577-00	PB1500P/NZ Pressure Cabinet Assembly	800kg (1764lbs)
BEC-CA-0556-00	PB1500P/SG Pressure Cabinet Assembly	800kg (1764lbs)

Optional Accessories

Stock Code	Description	Stock Code	Description
BAC-CA-PB-0212	Track & Trolley	BAC-CA-PB-0455	Foot Valve Guard
BAC-CA-PB-0243	Tumble Basket Ø350mm x 375mm	BAC-CA-PB-0292	Operator Sound Kit
BAC-CA-PB-0040	Tumble Basket Ø300mm x 325mm	BAC-CA-PB-0241	Dust Collector Silencer Kit
BAC-CA-PB-0244	Fixed Turntable Kit	BAC-CA-PB-0279	Rubber Lined Cabinet Kit
BAC-CA-PB-0277	Cabinet Gun Stand	BAC-DC-0002-01	Single Cartridge Auto-Reverse Pulse Kit

Parts List

Item	Stock Code	Description	Qty
1	BAC-CA-PB-0137	Rectangular Window	1
2	BAC-CA-PB-0141	Cabinet Window Seal	2
3	BAC-GL-PB-0003	10" Ø Cabinet Rubber Gloves	1PR
4	BAC-CA-PB-0157	Cabinet Entry Ring	2
5	BAC-CA-PB-0318	Cabinet Floor Mesh	1
6	BAC-CA-PB-0086	Foot Valve Spring Return	1
7	YAC-CA-PB-0219	Door Interlock Valve	1
8	BAC-CA-PB-0319	Cabinet Door Seal	1
9	BAC-CA-PB-0324	Air Entry Filter	2
10	YAC-CA-PB-0145	1/4" Blow Off Gun	2
11	YAC-CA-PB-0138	Latch	1
12	BAC-DC-PB-0007	Pulse Valve	1
13	BAC-DF-PB-0005	Filter Cartridge - Size 3	1
14	BAC-DC-PB-0032	Hanger Rod	1
15	YAC-CA-PB-0146	Handle	4
16	YAC-CA-PB-0205	Handle Tongue	4
17	BAC-PF-PB-0008	38mm (1-1/2") Ball Valve	1
18	BAC-CA-PB-0436	Dust Collector Jumbo Door Seal	1
19	BAC-CA-PB-0282	PB1500HD Rubber Lined Cyclone	1
20	BAC-CA-0600-00	Recovery Hose	1
21	YAC-NZ-PB-0081	ANH 1/2 Aluminium Nozzle Holder Detail	1
22	BAC-NZ-PB-0054	Blast Nozzle ATN-3S Alum/Tungsten Short	1
23	BAC-CA-0593-00	Blast Hose	1
24	BAC-HC-PB-0057	NTC-1/2 Nylon Threaded Pot Coupling	1
25	BAC-HC-PB-0054	NHC-1/2 Nylon Hose Coupling	1
26	BAC-VA-0397-00	Fina II Valve 1/2"M X 3/4"F	1
27	BAC-RC-PB-0014	UniFlo Valve Assembly With Fittings	1
28	BAC-AF-PB-0153	19mm (3/4") Pressure Regulator With Gauge	1
29	BAC-AF-PB-0057	19mm (3/4") Port Moisture Separator	1
30	BAC-PF-PB-0004	19mm (3/4") Ball Valve	2
31	BAC-PF-PB-0030	6mm (1/4")-125 PSI Pressure Relief Valve	1
32	BAC-PF-PB-0031	6mm (1/4") Pressure Gauge - Rear Entry	1
33	BAC-AF-PB-0048	9.5mm 3/8" Filter Regulator With Gauge	1
34	YAC-PF-PB-0125	1/4" NB Air Hose	2M
35	YAC-BF-PB-0041	Hose-Air/Water Delivery 19mmIDx29mmOD	3M
36	YAC-CA-PB-0183	Fan Impellor - 360CFM Aluminium	1
37	YAC-CA-PB-0142	230VAC 1PH 50HZ Motor	1

Technical Data



- Optional Turntable Load:**
 250kg (551lbs)
- Internal Size:**
 1400mm (55") Wide 1180mm (47") Deep
 1040mm (41") High
- Door Size:**
 1055mm (42") Wide 855mm (34") High
- Air Consumption:**
 85m³/hr (50cfm) @ 550kPa (80psi)
- Blast Nozzle Size:**
 BAC-NZ-PB-0054
 Nozzle ATN-3S Orifice 3/16" - 4.8mm
- Cabinet Light:**
 2 x 36 Watt 230V 50Hz
- Cabinet Overall Dimension:**
 1914mm (76") Wide 1912mm (76") Deep
 2638mm (104") High
- Recommended Floor Area:**
 3700mm (146") Wide 2700mm (106") Deep
- Window Size:**
 750mm (30") Wide 300mm (12") High
- Air Supply Line:**
 19mm (3/4")
- Electrical Power:**
 1.5Kw (2hp) 415VAC 50Hz 2 Pole 3 Phase

