

PB1000PMB Blast Cabinet



Complementary Products



ATN-S Blast Nozzles



ATN-M Blast Nozzles



Pow Air Vac



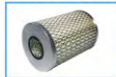
Moisture Separator



ABN-S Blast Nozzles



AER85 Blaster



Filter Cartridge



Cabinet Window Cover



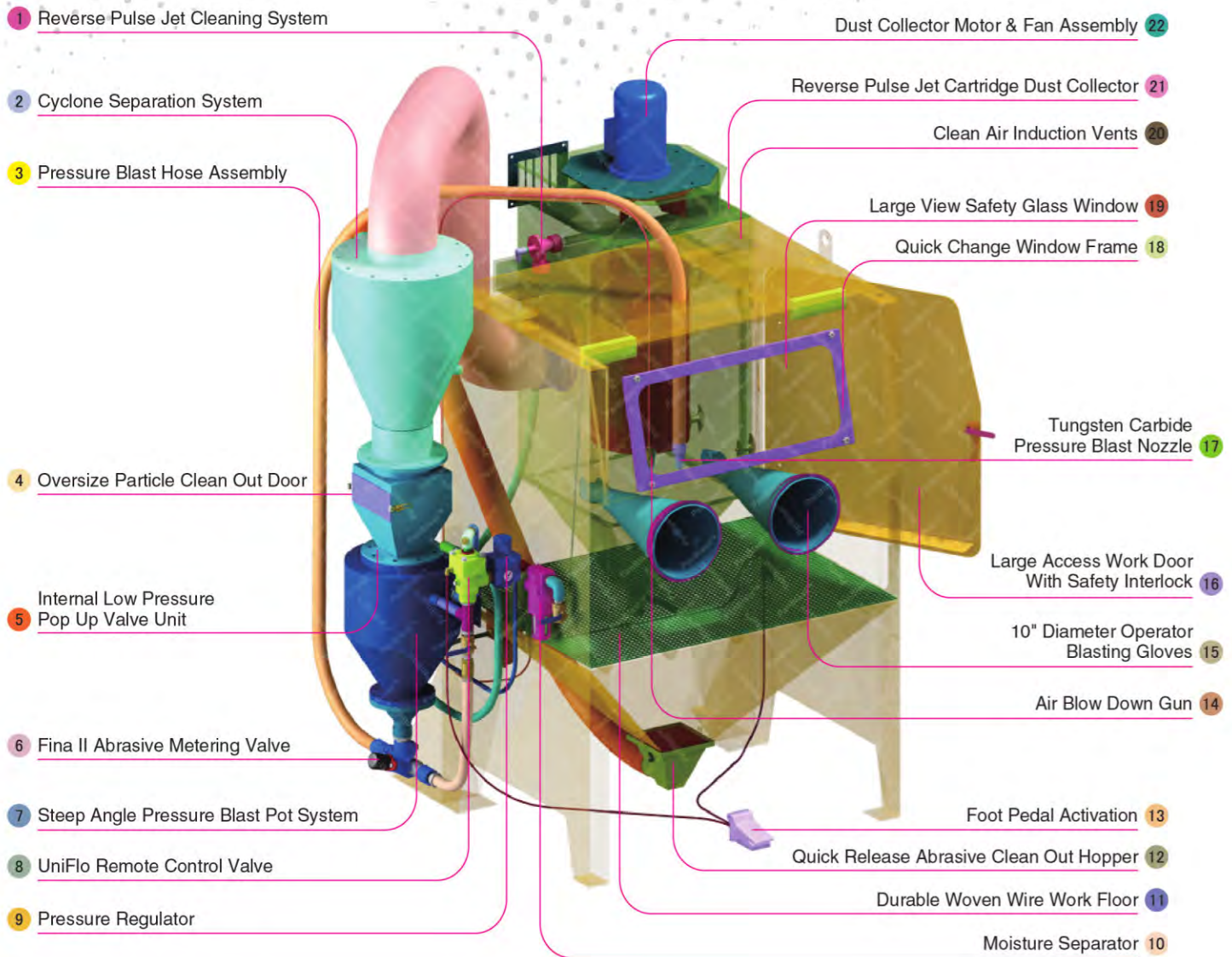
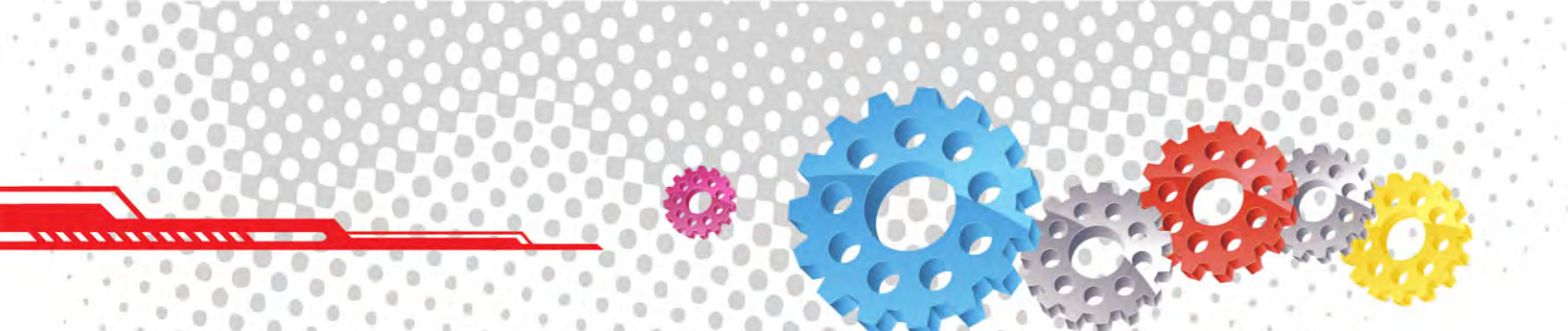
Product Features

The PB1000PMB Heavy Duty Pressure Blast Cabinet is a highly efficient, industrial blast cabinet, designed for use with plastic blasting media.

- ▶ Specially designed dump valve, allows blasting pressures as low as 5psi (35kPa).
- ▶ Optional magnetic grid separator removes ferrous contaminants from the plastic media.
- ▶ 28 liters (1ft³) blast pot with 60° cone for smooth abrasive flow.
- ▶ Cyclone type abrasive separator cleans abrasive during use.
- ▶ Safety door interlock.
- ▶ Integral dry cartridge reverse pulse dust collector maintains visibility.
- ▶ Heavy duty wear resistant rubber gloves.
- ▶ Quick-change laminated glass viewing window – no tools required.
- ▶ Fina II abrasive metering valve.
- ▶ Compressed air regulator and gauge.
- ▶ Standard air blow down gun.

Common Applications

- ▶ De-scale and de-rust soft surfaces.
- ▶ Remove coatings without damaging substrate.
- ▶ De-burr, de-flash and clean delicate surfaces.
- ▶ Removal of release agents and contamination from moulds.

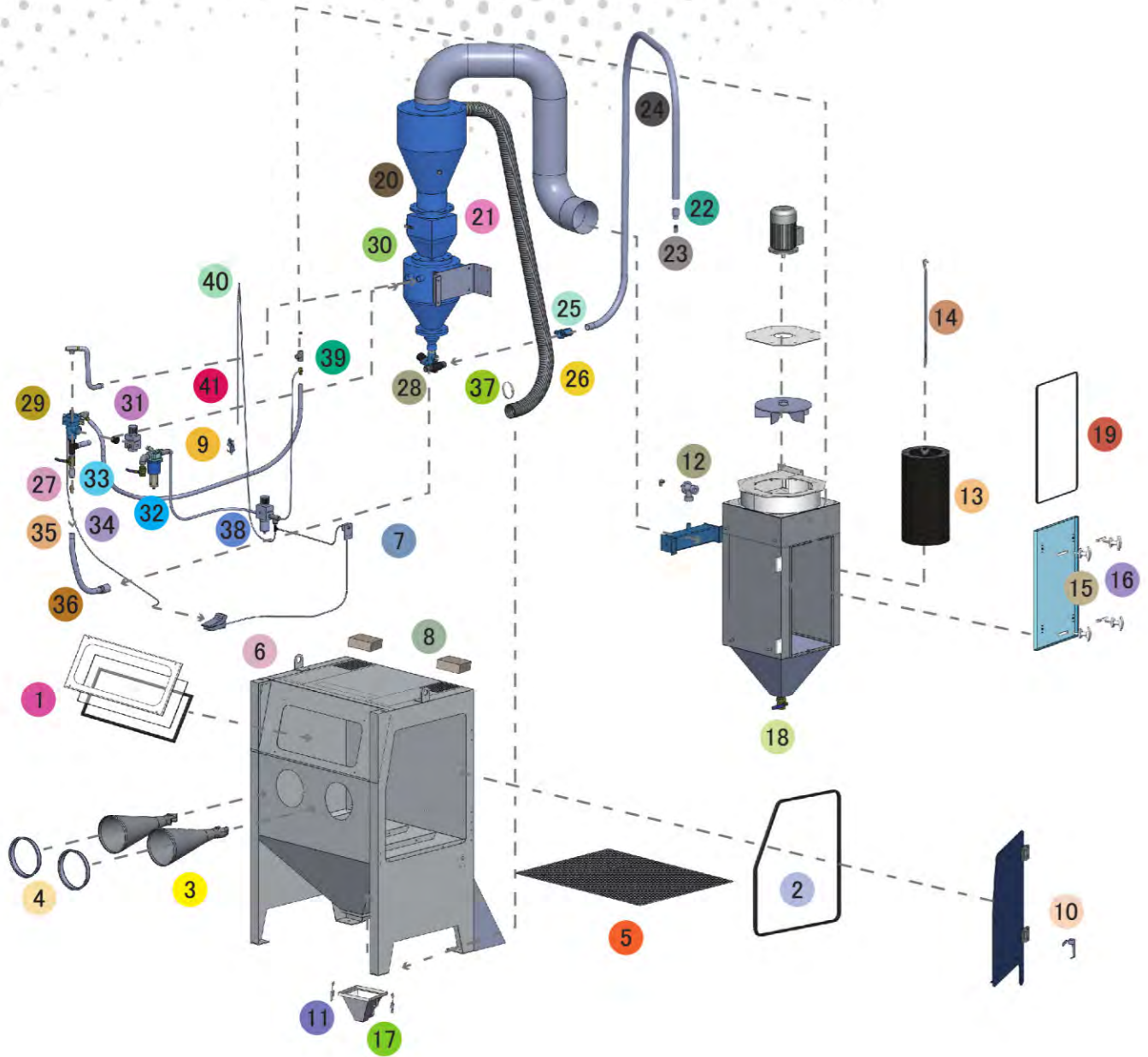
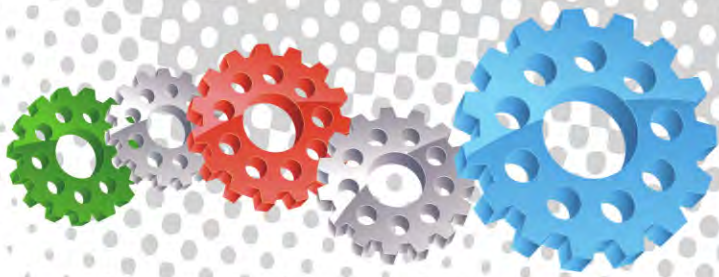


- 1 Reverse Pulse Jet Cleaning System
- 2 Cyclone Separation System
- 3 Pressure Blast Hose Assembly
- 4 Oversize Particle Clean Out Door
- 5 Internal Low Pressure Pop Up Valve Unit
- 6 Fina II Abrasive Metering Valve
- 7 Steep Angle Pressure Blast Pot System
- 8 UniFlo Remote Control Valve
- 9 Pressure Regulator

- Dust Collector Motor & Fan Assembly 22
- Reverse Pulse Jet Cartridge Dust Collector 21
- Clean Air Induction Vents 20
- Large View Safety Glass Window 19
- Quick Change Window Frame 18
- Tungsten Carbide Pressure Blast Nozzle 17
- Large Access Work Door With Safety Interlock 16
- 10" Diameter Operator Blasting Gloves 15
- Air Blow Down Gun 14
- Foot Pedal Activation 13
- Quick Release Abrasive Clean Out Hopper 12
- Durable Woven Wire Work Floor 11
- Moisture Separator 10

Component Highlights

- | | | |
|--|--|---|
| <ul style="list-style-type: none"> 1 Reverse Pulse Jet Cleaning System 2 Cyclone Separation System 3 Pressure Blast Hose Assembly 4 Oversize Particle Clean Out Door 5 Internal Low Pressure Pop Up Valve Unit 6 Fina II Abrasive Metering Valve 7 Steep Angle Pressure Blast Pot System 8 UniFlo Remote Control Valve | <ul style="list-style-type: none"> 9 Pressure Regulator 10 Moisture Separator 11 Durable Woven Wire Work Floor 12 Quick Release Abrasive Clean Out Hopper 13 Foot Pedal Activation 14 Air Blow Down Gun 15 10" Diameter Operator Blasting Gloves 16 Large Access Work Door With Safety Interlock | <ul style="list-style-type: none"> 17 Tungsten Carbide Pressure Blast Nozzle 18 Quick Change Window Frame 19 Large View Safety Glass Window 20 Clean Air Induction Vents 21 Reverse Pulse Jet Cartridge Dust Collector 22 Dust Collector Motor & Fan Assembly |
|--|--|---|



Assembly

Stock Code	Description	Weight
BEC-CA-PB-0005	PB1000PMB Blast Cabinet Assembly	650kg (1433lbs)

Optional Accessories

Stock Code	Description	Stock Code	Description
BAC-CA-PB-0180	Track & Trolley	BAC-CA-PB-0040	Tumble Basket Ø300mm x 325mm
BAC-CA-PB-0244	Fixed Turntable Kit	BAC-CA-PB-0455	Foot Valve Guard
BAC-CA-PB-0277	Cabinet Gun Stand	BAC-CA-PB-0292	Operator Sound Kit
BAC-CA-PB-0241	Dust Collector Silencer Kit	BAC-CA-PB-0278	Rubber Lined Cabinet
BAC-CA-PB-0243	Tumble Basket Ø350mm x 375mm	BAC-DC-0002-01	Single Cartridge Auto-Reverse Pulse Kit
BAC-CA-PB-0287	Magnetic Grid Kit		

Parts List

Item	Stock Code	Description	Qty
1	BAC-CA-PB-0137	Rectangular Window	1
2	BAC-CA-PB-0178	Cabinet Door Seal	1
3	BAC-GL-PB-0003	10" Ø Cabinet Rubber Gloves	1PR
4	BAC-CA-PB-0157	Cabinet Entry Ring	2
5	BAC-CA-PB-0126	Cabinet Floor Mesh	1
6	BAC-CA-PB-0086	Foot Valve Spring Return	1
7	YAC-CA-PB-0219	Interlock Plunger	1
8	BAC-CA-PB-0140	Air Entry Filter	2
9	YAC-CA-PB-0145	1/4" Blow Off Gun	1
10	YAC-CA-PB-0138	Latch	1
11	YAC-FN-PB-0041	Toggle Catch	4
12	BAC-DC-PB-0007	Pulse Valve	1
13	BAC-DF-PB-0002	Filter Cartridge - Size 2	1
14	BAC-DC-PB-0031	Hanger Rod	1
15	YAC-CA-PB-0146	Handle	4
16	YAC-CA-PB-0205	Handle Tongue	4
17	BAC-CA-PB-0117	PB500/PB1000 Hopper-Screen Detail	1
18	BAC-PF-PB-0008	38mm (1-1/2") Ball Valve	1
19	BAC-CA-PB-0406	Dust Collector Door Seal	1
20	BAC-CA-PB-0433	PB1000PMB Rubber Lined Cyclone	1
21	BAC-CA-0597-00	Recovery Hose	1
22	BAC-NZ-PB-0025	ANH-1/2 Aluminium Nozzle Holder	1
23	BAC-NZ-PB-0054	Blast Nozzle ATN-3S Alum/Tungsten Short	1
24	BAC-CA-0592-00	Blast Hose	1
25	BAC-HC-PB-0057	NTC-1/2 Nylon Threaded Pot Coupling	1
26	BAC-HC-PB-0054	NHC-1/2 Nylon Hose Coupling	1
27	BAC-PF-PB-0005	19mm (3/4") Non Return Valve	1
28	BAC-VA-0397-00	Fina II Valve 1/2"M X 3/4"F	1
29	BAC-RC-PB-0014	Uniflo Valve Assembly With Fittings	1
30	YAC-BF-0355-00	Air Spring Valve Assembly	1
31	BAC-AF-PB-0153	19mm (3/4") Pressure Regulator With Gauge	1
32	BAC-AF-PB-0057	19mm (3/4") Port Moisture Separator	1
33	BAC-PF-PB-0004	19mm (3/4") Ball Valve	2
34	YAC-PF-PB-0059	Hose Barb	2
35	YAC-FN-PB-0242	Hose Clamp	5
36	YAC-BF-PB-0041	Hose-Air/Water Delivery 19mmIDx29mmOD	2.5M
37	YAC-FN-PB-0117	Hose Clamp	2
38	BAC-AF-PB-0048	9.5mm 3/8" Filter Regulator With Gauge	1
39	YAC-PF-PB-0186	KC Nipple	1
40	YAC-PF-PB-0125	1/4" NB Air Hose	1.5M
41	YAC-FN-PB-0263	O-Clip	2

Technical Data



- Optional Turntable Load:**
 250kg (551lbs)
- Internal Size:**
 1100mm (43") Wide 920mm (36") Deep
 890mm (35") High
- Door Size:**
 755mm (30") Wide 855mm (34") High
- Air Consumption:**
 85m³/hr (50cfm) @550kPa (80psi)
- Blast Nozzle Size:**
 BAC-NZ-PB-0054
 Nozzle ATN-3S Orifice 3/16" - 4.8mm
- Cabinet Light:**
 2 x 18 Watt 230V 50Hz
- Cabinet Overall Dimension:**
 1820mm (72") Wide 1573mm (62") Deep
 2450mm (97") High
- Recommended Floor Area:**
 3400mm (134") Wide 2400mm (95") Deep
- Window Size:**
 750mm (30") Wide 300mm (12") High
- Air Supply Line:**
 19mm (3/4")
- Electrical Power:**
 1.5Kw (2hp) 415VAC 50Hz 2 Pole 3 Phase

