

BP600-2 Blast Pots



Product Features

BP Series Blast Pots are available in multiple configurations and specifications to suit varying market requirements worldwide. The BP600-2 is a full-size, automatic blast pot, suitable for large-scale blasting operations.

- ▶ Designed and manufactured in accordance with international standards and requirements.
- ▶ Third party pressure vessel test certificates available on request.
- ▶ Separate Tandem air inlet and exhaust valves, for fast and efficient operation.
- ▶ AirStop non-bleed type pneumatic deadman handle
- ▶ Corsa II type automatic pressure-hold abrasive control valve for precise metering and easy maintenance.
- ▶ Moisture trap, exhaust muffler and main air isolation valve standard.
- ▶ Wide, pneumatic wheels for increased maneuverability and stability.
- ▶ 170 liters (6 ft³) abrasive capacity, 125 or 150psi pressure rating.
- ▶ 32mm (1-1/4") fittings.

Common Applications

- ▶ On site industrial and commercial blasting.
- ▶ Blast and painting contractor yard work.
- ▶ Blast room applications with or without abrasive recovery systems.
- ▶ In situ blasting in shipyards and slipways.

Complementary Products



Blast Hoses



Titan II SAR



Couplings & Nozzle Holders



Whip Checks



ATN Blast Nozzles



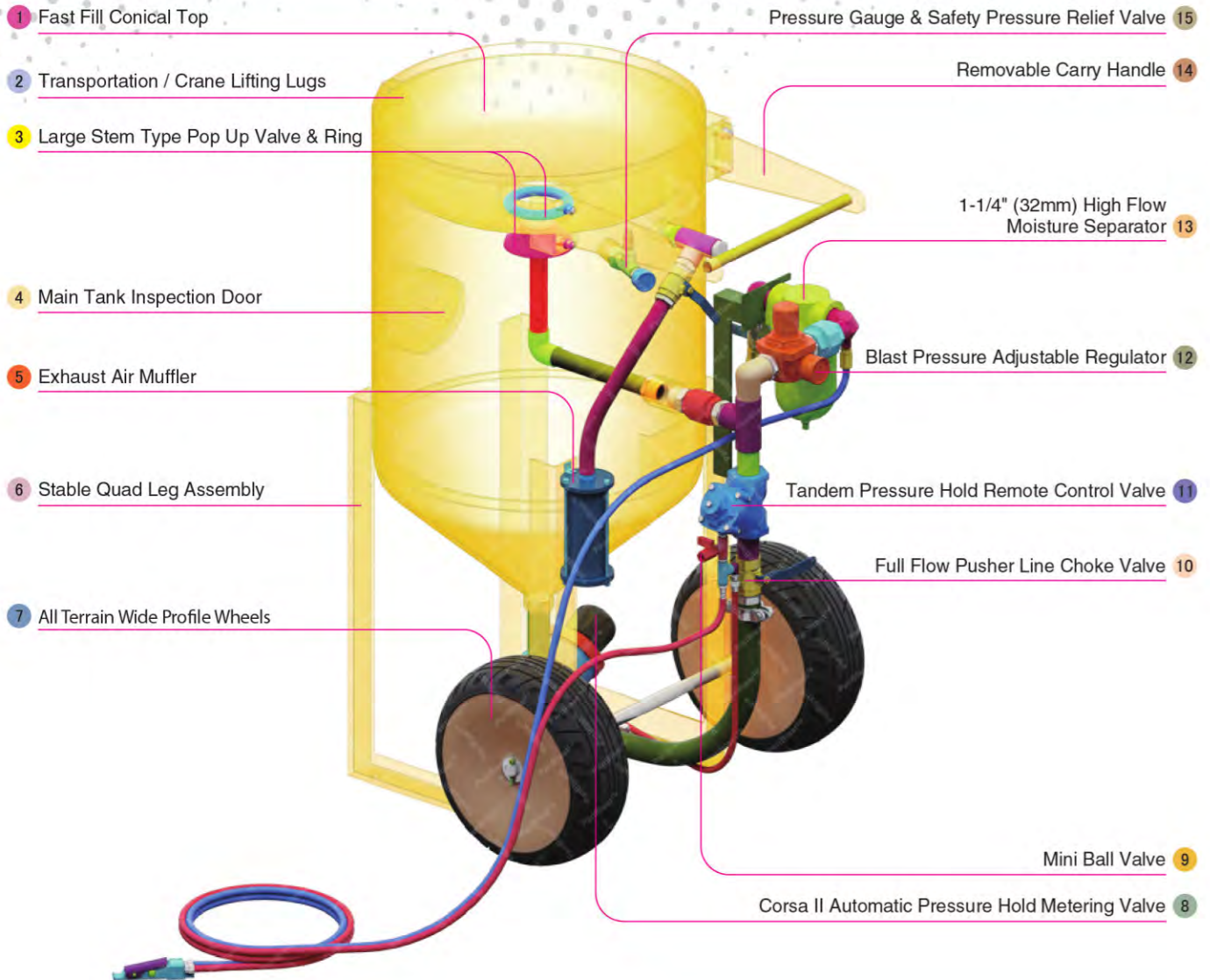
VisiFlo Premium Filter



Electric Remote System



Blasting Suit & Gloves



1 Fast Fill Conical Top

2 Transportation / Crane Lifting Lugs

3 Large Stem Type Pop Up Valve & Ring

4 Main Tank Inspection Door

5 Exhaust Air Muffler

6 Stable Quad Leg Assembly

7 All Terrain Wide Profile Wheels

Pressure Gauge & Safety Pressure Relief Valve 15

Removable Carry Handle 14

1-1/4" (32mm) High Flow Moisture Separator 13

Blast Pressure Adjustable Regulator 12

Tandem Pressure Hold Remote Control Valve 11

Full Flow Pusher Line Choke Valve 10

Mini Ball Valve 9

Corsa II Automatic Pressure Hold Metering Valve 8

Component Highlights



1 Fast Fill Conical Top

2 Transportation / Crane Lifting Lugs

3 Large Stem Type Pop Up Valve & Ring

4 Main Tank Inspection Door

5 Exhaust Air Muffler

6 Stable Quad Leg Assembly

7 All Terrain Wide Profile Wheels

8 Corsa II Automatic Pressure Hold Metering Valve

9 Mini Ball Valve

10 Full Flow Pusher Line Choke Valve

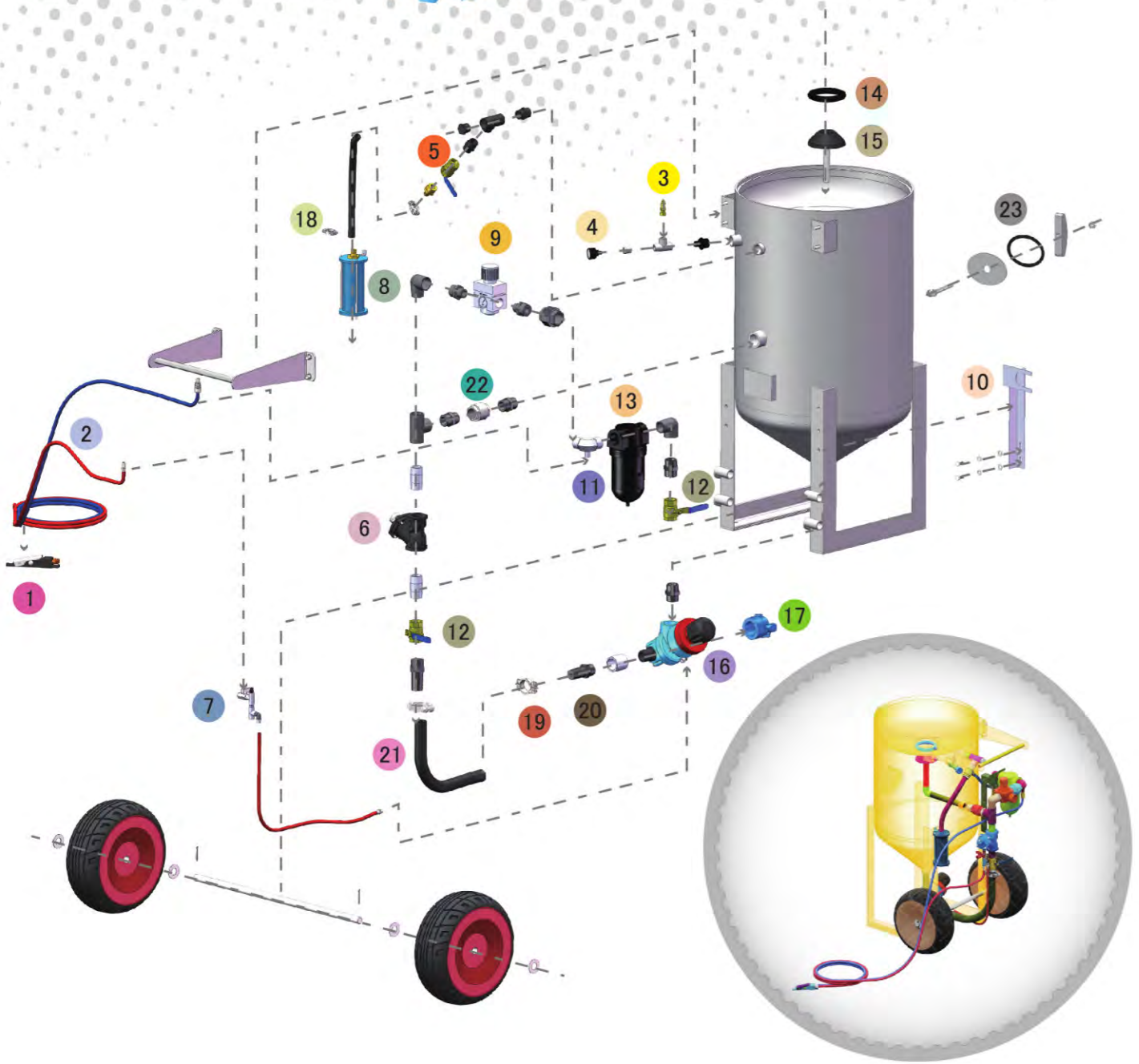
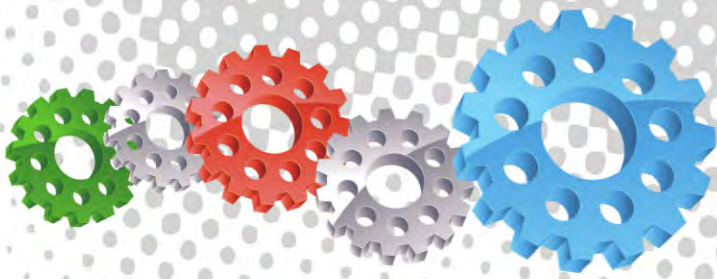
11 Tandem Pressure Hold Remote Control Valve

12 Blast Pressure Adjustable Regulator

13 1-1/4" (32mm) High Flow Moisture Separator

14 Removable Carry Handle

15 Pressure Gauge & Safety Pressure Relief Valve



Assemblies

Stock Code	Description	Dry Weight	Abrasive Capacity	Piping Size
BEP-PS-PB-0008	BP600-2/AU/NZ Tandem Corsa II-US AirStop	205kg (452lbs)	200 litres (6ft ³)	32mm (1 1/4")
BEP-PS-0072-00	BP600-2/MY Tandem Corsa II-US AirStop	205kg (452lbs)	200 litres (6ft ³)	32mm (1 1/4")



All data and information subject to change without prior notice. Brochure reference CAT-0101-06-00



Parts List



Description	Qty	Description	Qty	Description	Qty
1 AirStop Pneumatic Control Handle	1	9 25mm(1") Pressure Regulator	1	17 NTC-1 Nylon Threaded Pot Coupling	1
2 20m (66') Twinline Hose Assembly	1	10 Support Bracket	1	18 Hose Clamp	2
3 1/2" BSP - 125 PSI Pressure Relief Valve	1	11 Elbow	1	19 Hose Clamp	2
4 6mm (1/4") Pressure Gauge - Rear Entry	1	12 32mm (1-1/4") Ball Valve	2	20 KC Nipple	2
5 25mm (1") Ball Valve	1	13 32mm (1-1/4") Filter Separator	1	21 Hose-Air/Water Delivery 32mmIDX45mmOD	0.55 MTR
6 1 1/4" Tandem NPT Valve Assembly	1	14 Pop Up Valve Seating Ring	1	22 32MM (1-1/4") Non Return Valve	1
7 Mini Ball Valve	1	15 Pop Up Valve - Stem Type	1	23 Blast Pot-H/Hole 192x144-Sealing Gasket	1
8 Exhaust Muffler	1	16 Corsa II 1-1/4" With Urethane Sleeve	1		