

# BP316-2/NZ/MY Blast Pot



## Product Features

BP Series Blast Pots are available in multiple configurations and specifications to suit varying market requirements worldwide. The BP316-2 is a medium-capacity, automatic blast pot, suitable for general blasting.

- ▶ Designed and manufactured in accordance with international standards and requirements.
- ▶ Third party pressure vessel certificates available on request.
- ▶ Separate Tandem air inlet and exhaust valves, for fast and efficient operation.
- ▶ AirStop non-bleed type pneumatic deadman handle.
- ▶ Corsa II type automatic pressure-hold abrasive control valve for precise metering and easy maintenance.
- ▶ Moisture trap, exhaust muffler and main air isolation valve standard.
- ▶ Wide, pneumatic wheels for increased maneuverability and stability.
- ▶ 3ft<sup>3</sup> abrasive capacity, 125psi pressure rating.
- ▶ 1-1/4" fittings.

## Common Applications

- ▶ On site industrial and general blasting.
- ▶ Blast and painting contractor yard work.
- ▶ Blast room applications with or without abrasive recovery systems.
- ▶ In situ blasting in shipyards and slipways.

## Complementary Products



Blast Hoses



Safe-T-Pinch Valve



Spartan Blast Helmet



PBF II-1 Filter



Electric Remote Conversion Kit



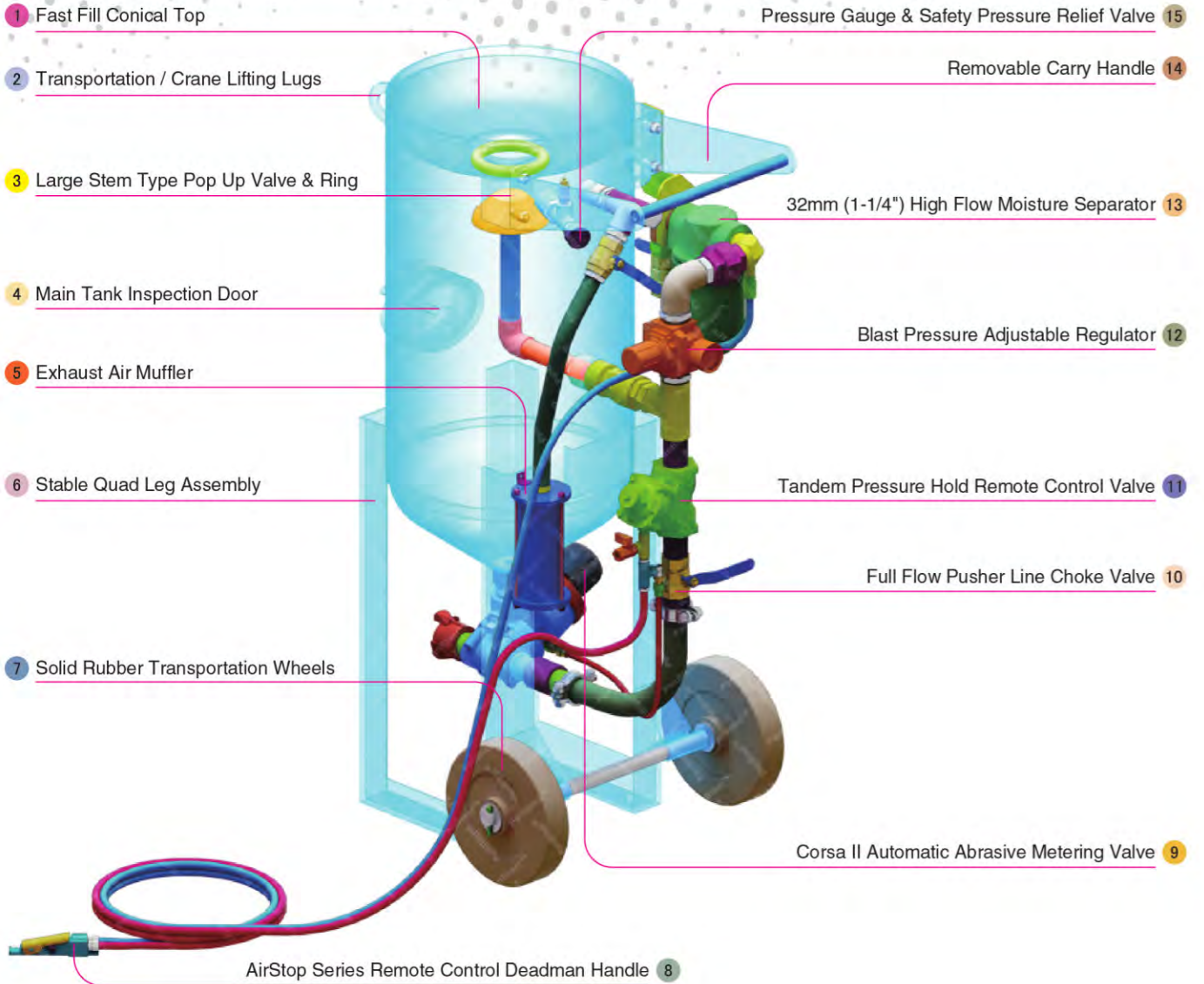
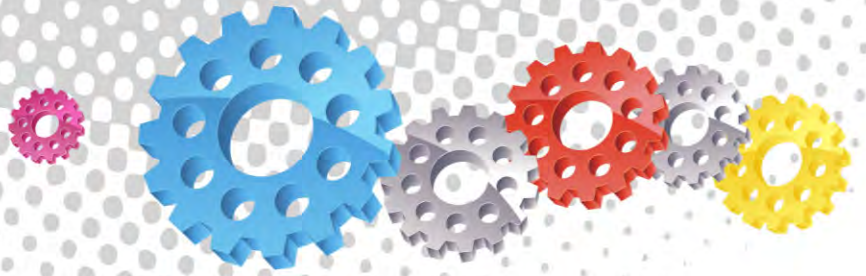
ATN Blast Nozzles



ProFlo Recycling System



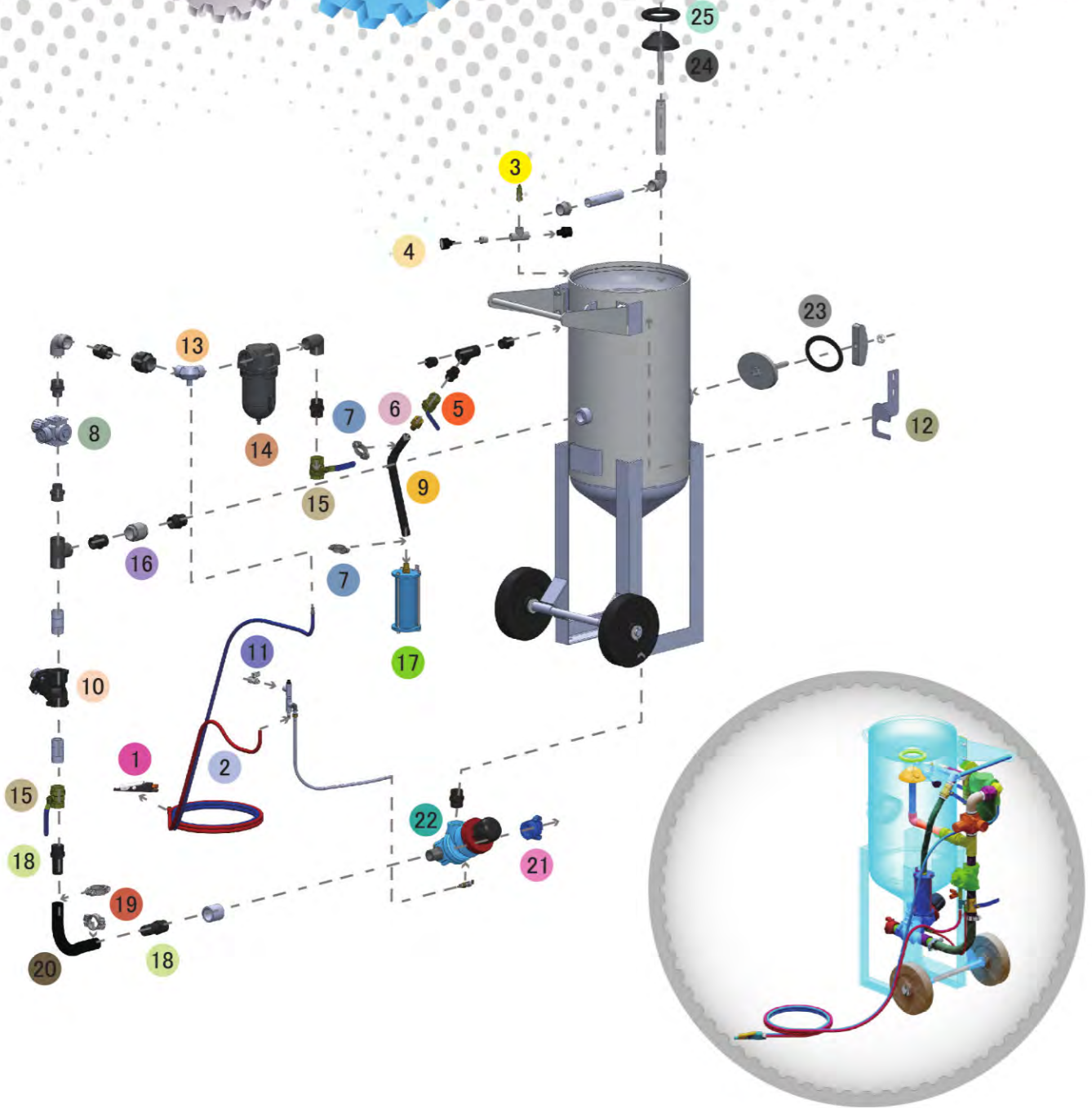
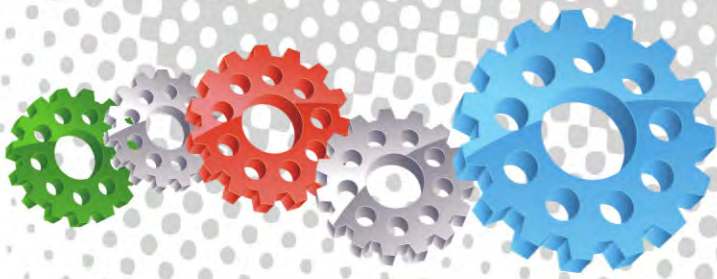
Airless Spray Pumps



## Component Highlights



- |                                       |  |  |
|---------------------------------------|--|--|
| 1 Fast Fill Conical Top               | 6 Stable Quad Leg Assembly                     | 11 Tandem Pressure Hold Remote Control Valve     |
| 2 Transportation / Crane Lifting Lugs | 7 Solid Rubber Transportation Wheels           | 12 Blast Pressure Adjustable Regulator           |
| 3 Large Stem Type Pop Up Valve & Ring | 8 AirStop Series Remote Control Deadman Handle | 13 32mm (1-1/4") High Flow Moisture Separator    |
| 4 Main Tank Inspection Door           | 9 Corsa II Automatic Abrasive Metering Valve   | 14 Removable Carry Handle                        |
| 5 Exhaust Air Muffler                 | 10 Full Flow Pusher Line Choke Valve           | 15 Pressure Gauge & Safety Pressure Relief Valve |

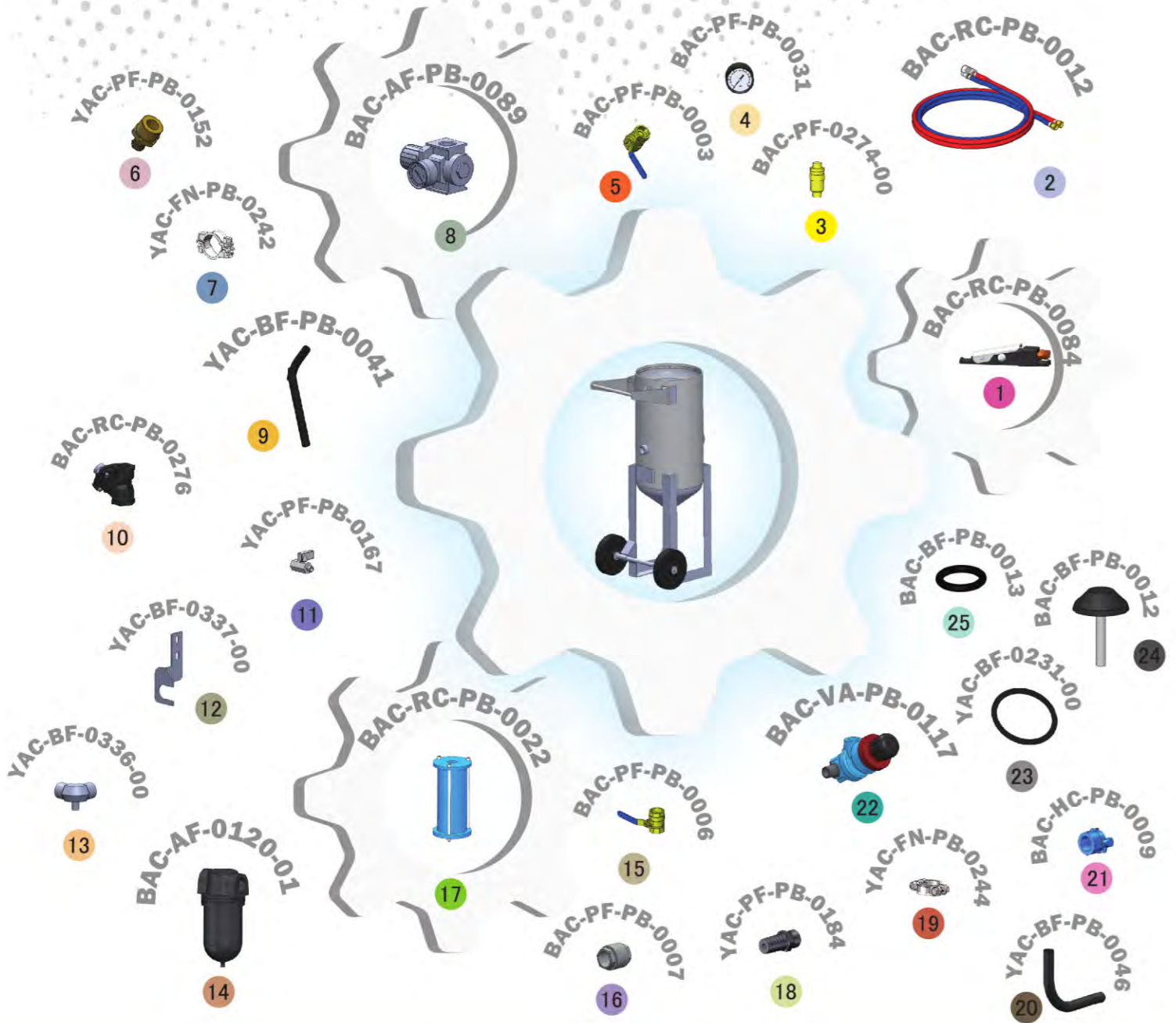


## Assembly

Stock Code	Description	Dry Weight	Abrasive Capacity	Piping Size
BEP-PS-0077-00	BP316-2/NZ/MY Tandem Corsa II-US AirStop	145kg (320lbs)	100 litres (3ft³)	32mm (1 1/4")



All data and information subject to change without prior notice. Brochure reference CAT-0101-04-00



## Parts List



Description	Qty	Description	Qty	Description	Qty
1 AirStop Pneumatic Control Handle	1	10 1 1/4" Tandem NPT Valve Assembly	1	19 Hose Clamp	2
2 20m (66') Twinline Hose Assembly	1	11 Mini Ball Valve	1	20 Hose-Air/Water Delivery 32mmIDx45mmOD	0.55M
3 1/2" BSP - 125 PSI Pressure Relief Valve	1	12 Support Bracket	1	21 NTC-1 Nylon Threaded Pot Coupling	1
4 6mm (1/4") Pressure Gauge - Rear Entry	1	13 Elbow	1	22 Corsa II 1-1/4" With Urethane Sleeve	1
5 25mm (1") Ball Valve	1	14 32mm (1-1/4") Filter Separator	1	23 Blast Pot-H/Hole 192x144 -Sealing Gasket	1
6 Hose Barb	1	15 32mm (1-1/4") Ball Valve	2	24 Pop Up Valve - Stem Type	1
7 Hose Clamp	2	16 32mm (1-1/4") Non Return Valve	1	25 Pop Up Valve Seating Ring	1
8 25mm (1") Pressure Regulator	1	17 Exhaust Muffler	1		
9 Hose-Air/Water Delivery 19mmIDx29mmOD	0.4M	18 KC Nipple	2		