

BP110-1/AU/NZ Blast Pot



Product Features

BP Series Blast Pots are available in multiple configurations and specifications to suit varying market requirements worldwide. The BP110-1 is a medium-capacity, automatic blast pot, suitable for touch-up blasting and small-scale operations.

- ▶ Designed and manufactured in accordance with international standards and requirements.
- ▶ Third party pressure vessel certificates available on request.
- ▶ UniFlo combination type remote control valve.
- ▶ AirFlo air-bleed type pneumatic deadman handle
- ▶ Fina II type abrasive control valve for precise metering and easy maintenance.
- ▶ Moisture trap, exhaust muffler and main air isolation valve standard.
- ▶ 31litres (1.1ft³) abrasive capacity, 125psi pressure rating.
- ▶ 19mm (3/4") fittings.

Common Applications

- ▶ On site industrial and commercial blasting.
- ▶ Blast and painting contractor yard work.
- ▶ Blast room applications with or without abrasive recovery systems.
- ▶ In situ blasting in shipyards and slipways.

Complementary Products



Blast Hoses



Cosmo SAR



Couplings & Nozzle Holders



Whip Checks



ATN Blast Nozzles



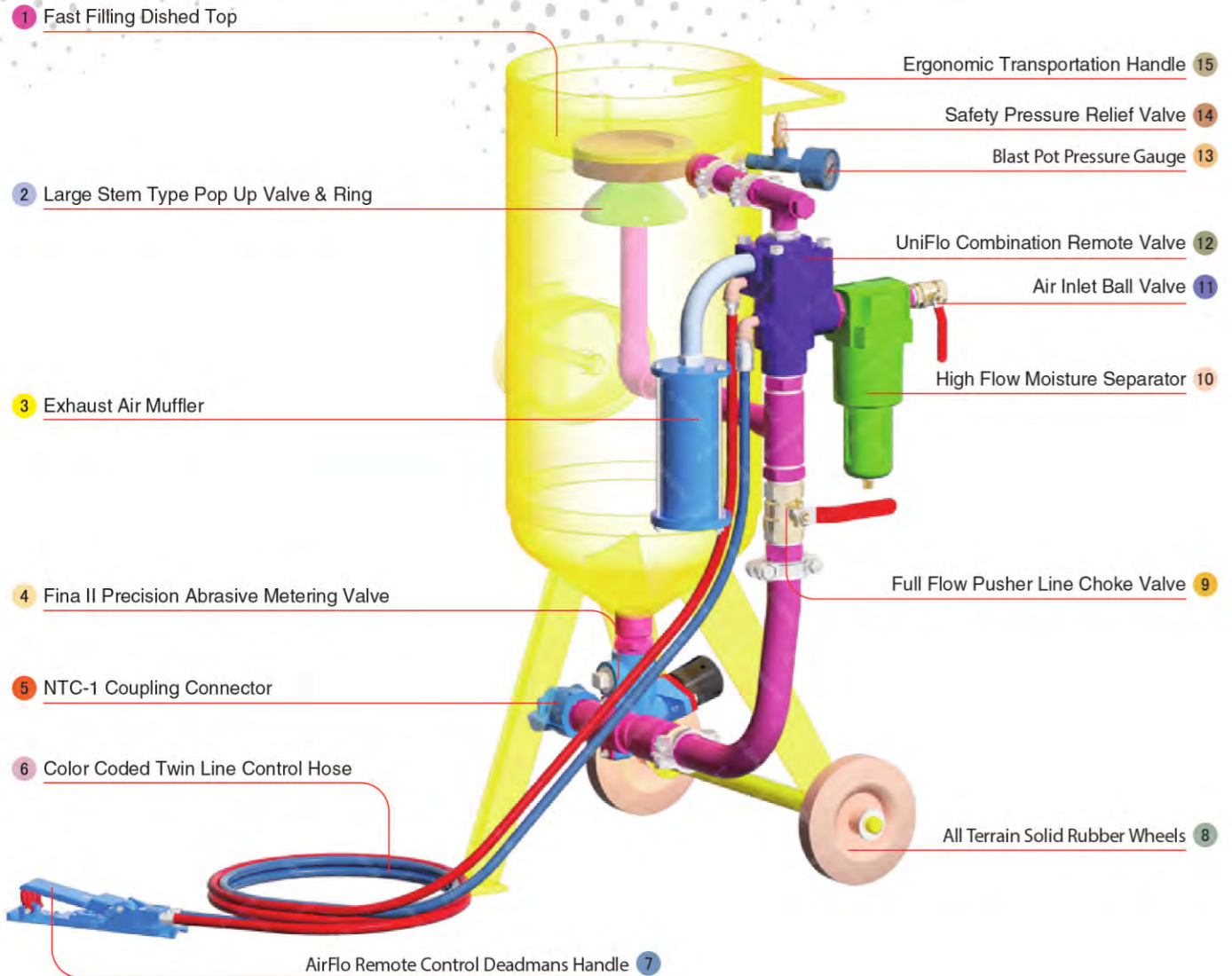
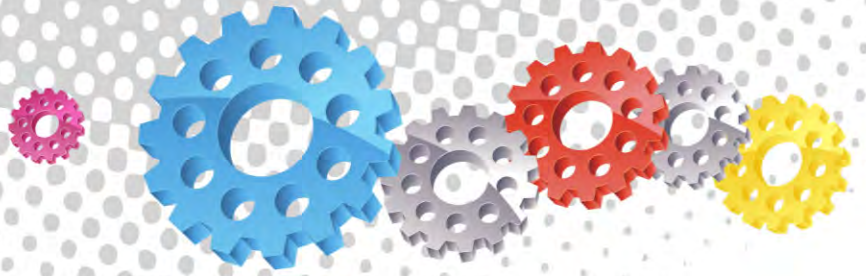
VisiFlo Premium Filter



Electric Remote System



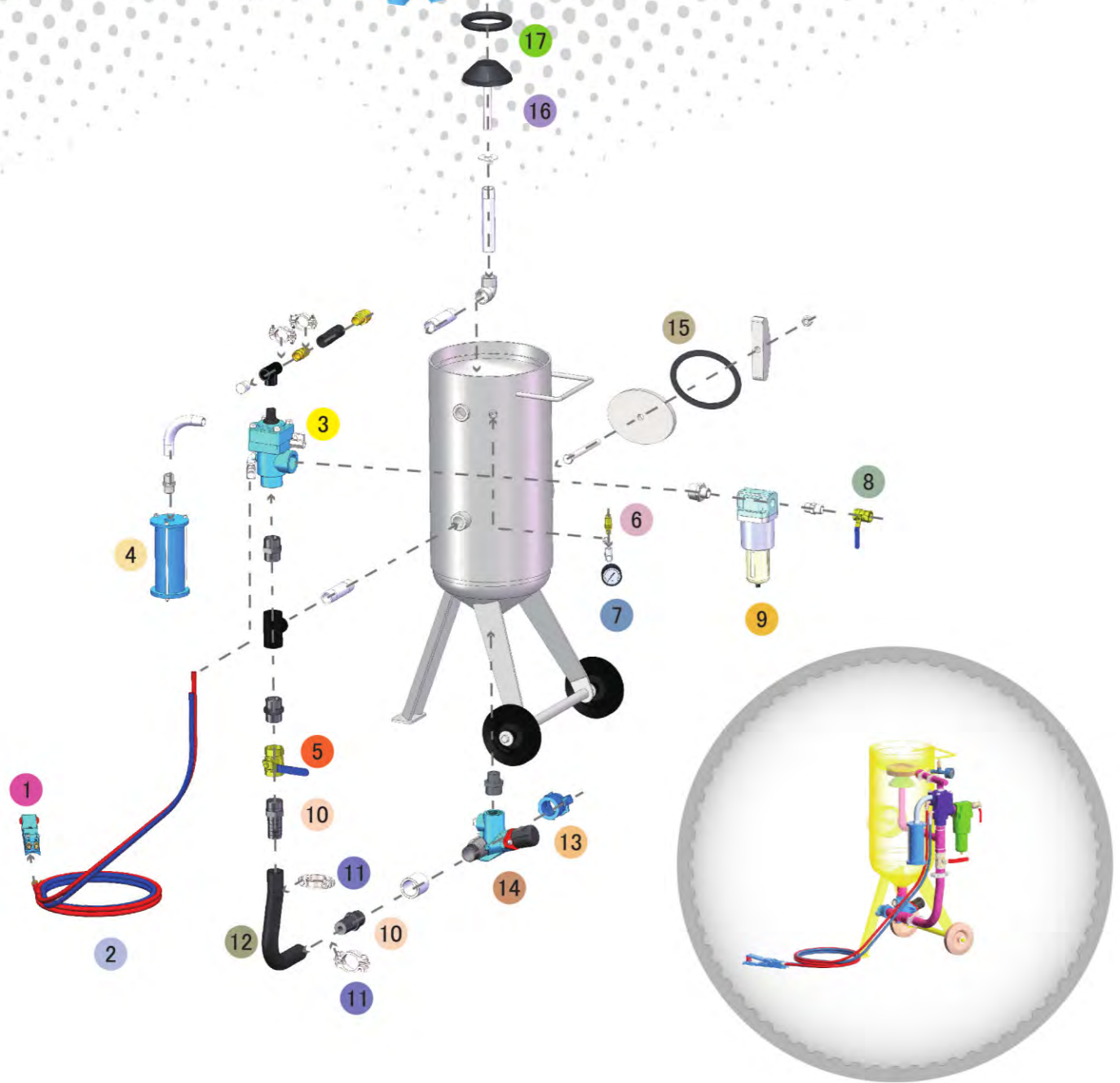
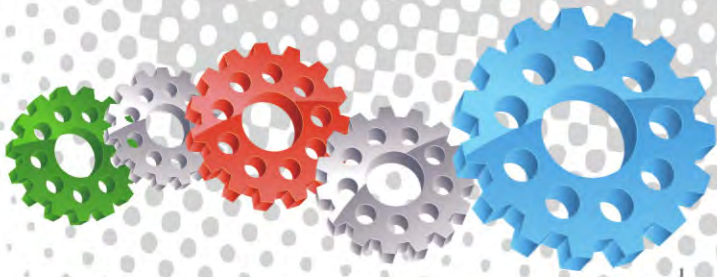
Blasting Suit & Gloves



Component Highlights



- | | | |
|---|---|------------------------------------|
| 1 Fast Filling Dished Top | 6 Color Coded Twin Line Control Hose | 11 Air Inlet Ball Valve |
| 2 Large Stem Type Pop Up Valve & Ring | 7 AirFlo Remote Control Deadmans Handle | 12 UniFlo Combination Remote Valve |
| 3 Exhaust Air Muffler | 8 All Terrain Solid Rubber Wheels | 13 Blast Pot Pressure Gauge |
| 4 Fina II Precision Abrasive Metering Valve | 9 Full Flow Pusher Line Choke Valve | 14 Safety Pressure Relief Valve |
| 5 NTC-1 Coupling Connector | 10 High Flow Moisture Separator | 15 Ergonomic Transportation Handle |



Assembly

Stock Code	Description	Dry Weight	Abrasive Capacity	Piping Size
BEP-PS-0058-00	BP110-1/AU/NZ UniFlo Fina II AirFlo	90kg (198lbs)	31 litres (1.1ft ³)	19mm (3/4")



All data and information subject to change without prior notice. Brochure reference CAT-0101-08-00



Parts List



Description	Qty	Description	Qty	Description	Qty
1 AirFlo Pneumatic Control Handle	1	7 6mm (1/4") Pressure Gauge - Rear Entry	1	13 NTC-1 Nylon Threaded Pot Coupling	1
2 10m (33') Twinline Hose Assembly	1	8 19mm (3/4") Ball Valve	1	14 Fina II Valve 1-1/4\"/>	